

QA-CAD Software Installation and Beginners' Guide Vol.9.8: how to create a FAI report from PDF/CAD drawings in QA-CAD

© 2021 Guthrie CAD/GIS Software Pty Ltd.

Image 1. Select and capture dimension and tolerance by OCR

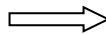
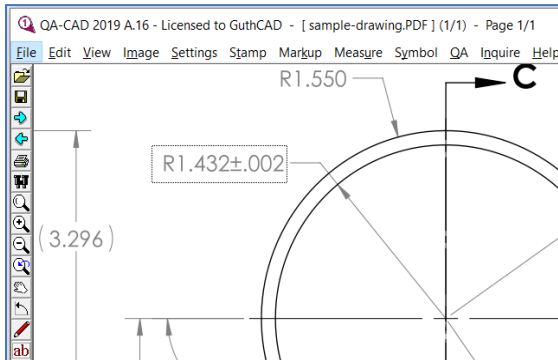
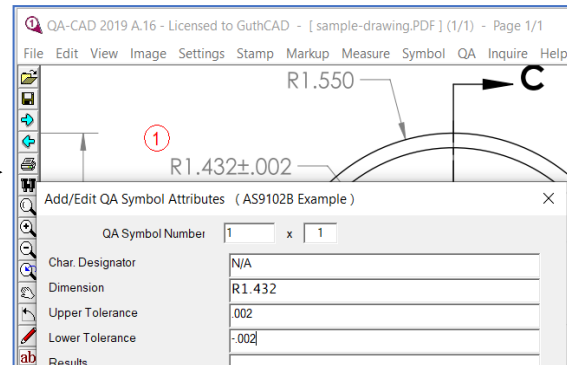


Image 2. OCR output captured dimension in Dimension field



Please click the below link to watch the auto ballooning feature demo video clip.

https://youtu.be/Ig_xtr5Xbho

Table of Contents

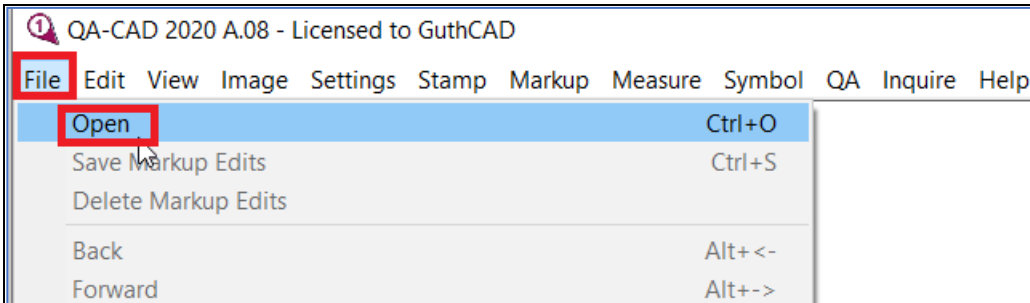
Open a drawing file and zoom in / out a drawing file.....	3
Set up your tolerance configuration	5
Set up your EXCEL template (AS/EN/SJAC9102, PPAP or your inspection report template).....	9
Set up reference zone and edit drop-down menu	15
How to extract individual dimension, tolerance, and notes from text-selectable PDF or AutoCAD files	17
How to do auto ballooning PDF, raster image files, or DWG / DXF (How to use Group dimension capture feature)	22
How to capture individual dimension, tolerance, notes and GD&T features control frame from image only PDF or image files (TIFF, JPEG, etc.) with OCR method (single dimensions capture method)	30
Output captured data to EXCEL template	36
Save the ballooning data without changing an original drawing (to save the work ballooned drawing).	38
Publish the ballooned drawing to PDF (to save the delivery ballooned drawing.)	39
How to enter a new balloon that was missed and the following balloons will change automatically.....	40

Open a drawing file

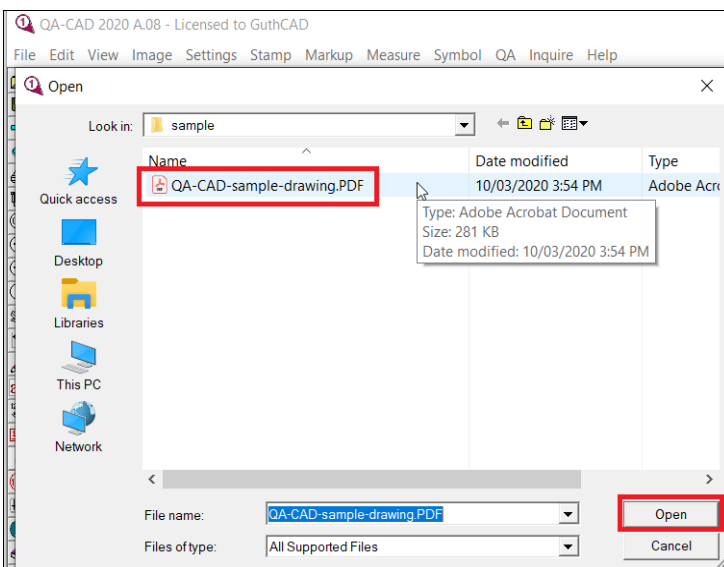


[Please click here to watch this section's tutorial video clip.](#)

Step 1: First, Open your PDF drawing file in QA-CAD. Select File > Open



Step 2: Select your PDF drawing file (or CAD file). Then press Open button.



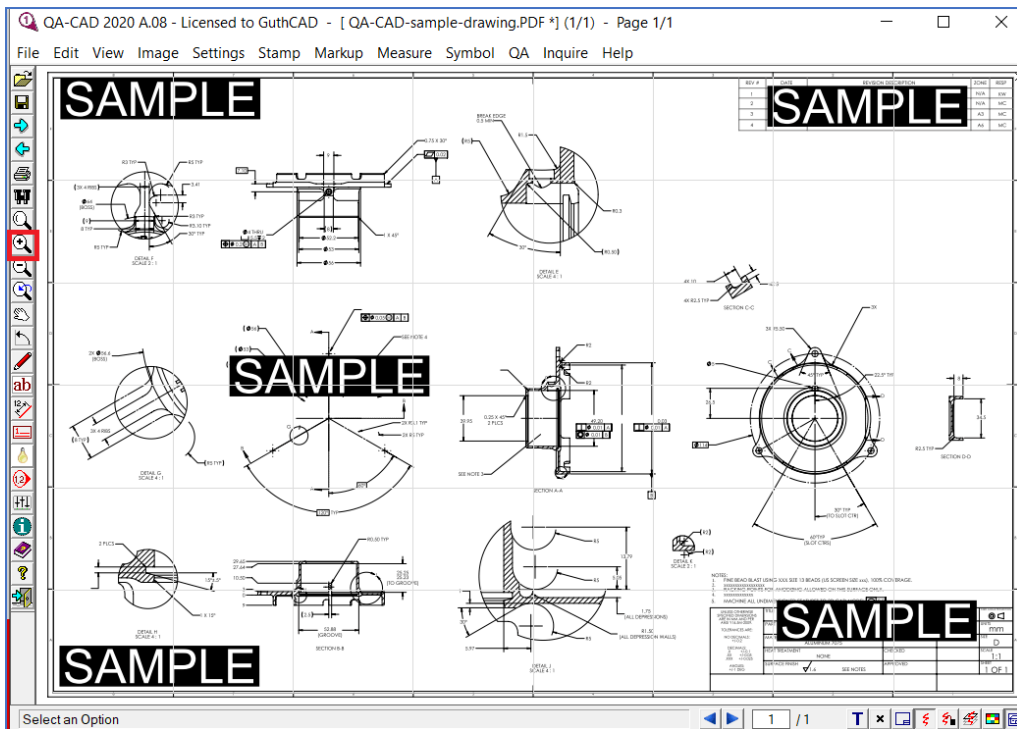
To learn QA-CAD features, you can download the sample PDF drawing (image-only type PDF) from the below link.

<https://www.guthcad.com/tutorials/qa-cad/QA-CAD-sample-drawing.pdf>

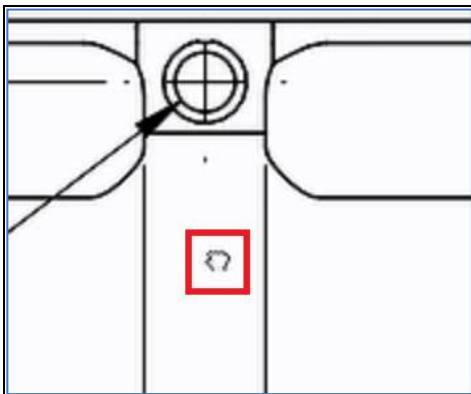
Step 3: You can zoom in the software screen by rolling up the mouse wheel if the letters in the drawing are too small or you can zoom out the software screen by rolling down the mouse wheel if the letters in the drawing are too large. Alternatively Press 'Zoom In' button (the red rectangle in the below image) or press 'Zoom Out' button. Then move a mouse pointer to the drawing. When you left click, you can zoom in your drawing.



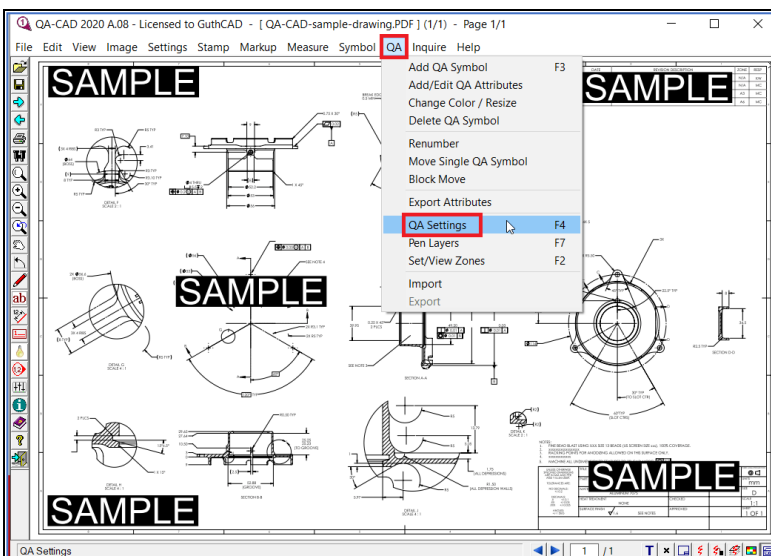
[Click here to watch this section's demo video clip.](#)



Then press left-click and hold it. The mouse pointer appearance changes to hand symbol. Then you can move the drawing (up or down, left or right).



Step 4: Next, click 'QA' from top menu and select 'QA Settings'.



Set up your tolerance configuration

Step 5: Then 'QA Settings' window open and select Attributes tab. QA-CAD can capture dimension and its specified tolerance together from your drawing if the dimension and the tolerance are drawn together (for example: $.174 \pm 0.02$). However, if tolerance is unspecified in your drawing (for example: $.174$), QA-CAD can enter tolerance automatically based on dimension in the drawing. In QA-CAD, there are three automatic tolerance entry methods in case of unspecified tolerance (You can set up a maximum of 5 tolerance settings).

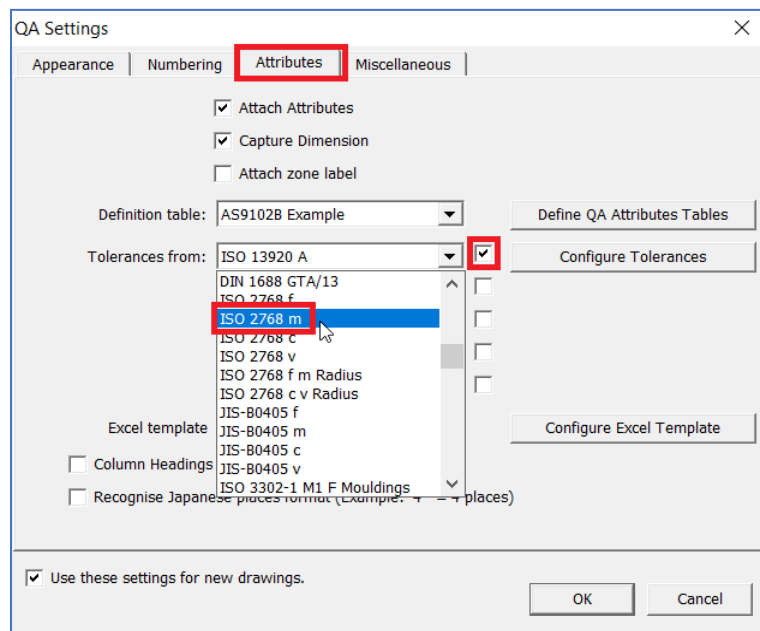
Method 1: Select tolerance standard from a built-in QA-CAD tolerance table database.



[Click here to watch this section's demo video clip.](#)



If you find tolerance requirement like the above images in your drawing, you need to tick one of the Tolerance settings and select required tolerance standard in its Tolerance from drop-down menu (for example: you can select 2768-m, which is ISO 2768 General tolerances and its medium(m) tolerance class designation). Then press the OK button and proceed to Step 6.



(another example: If your drawing requires ISO 13920, select 13920 in Tolerance from drop-down menu. QA-CAD has the built-in tolerance tables for a wide number of standards. If you cannot find your required tolerance standard, please contact us. Maybe we can add it in QA-CAD.)

Allowable deviations on untoleranced dimensions for welding constructions:
EN ISO 13920

Method 2: Set up and use your Default Tolerance.



[Click here to watch this section's demo video clip.](#)

If you see the below tolerance requirement in your drawing, you need to set up your default tolerance, click Attributes tab and press the configure tolerances button.

UNLESS OTHERWISE
SPECIFIED DIMENSIONS
ARE IN MM AND PER
ANSI Y14.5M-2009.

TOLERANCES ARE:

NO DECIMALS:
+/-0.2

DECIMALS:
.X +/-0.1
.XX +/-0.05
.XXX +/-0.025

ANGLES:
+/-1 DEG

QA Settings

Appearance | Numbering | **Attributes** | Miscellaneous

☒ Attach Attributes
☒ Capture Dimension
☐ Attach zone label

Definition table: AS9102B Example

Tolerances from: **ISO 13920 A** ☒ **Configure Tolerances**

ISO 13920 B ☐
ISO 13920 C ☐
ISO 13920 D ☐
ISO 2768 m ☐

Excel template: AS9102B **Configure Excel Template**

☐ Column Headings
☐ Recognise Japanese places format (Example: '4-' = 4 places)

☒ Use these settings for new drawings.

OK Cancel

Then Manage Tolerances window opens. Click the Default Tolerance tab. Type required linear/angular tolerance depends on decimal places (for example: if decimals are +/-0.1 for .X, type 0.1 as a Linear tolerance for Decimal Places X.X). Once you complete to set up your required tolerances, press the Save button.

Manage Tolerances

Default Tolerances | Custom Tolerances

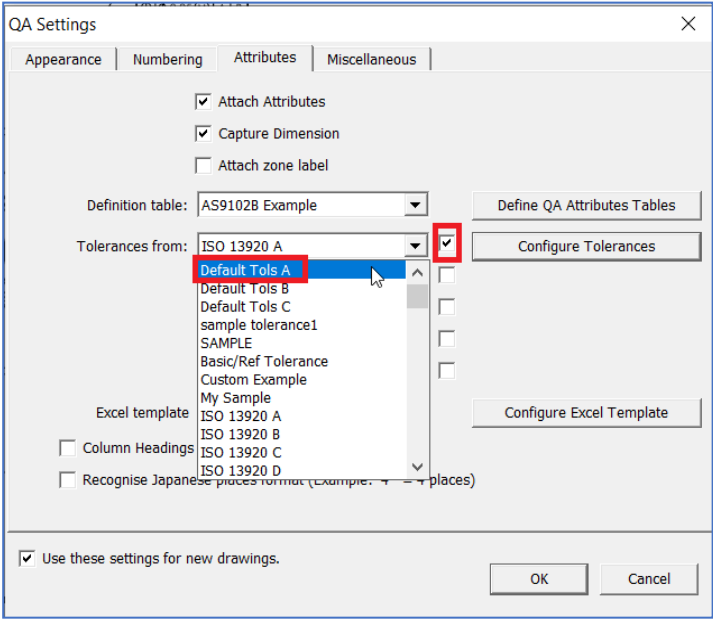
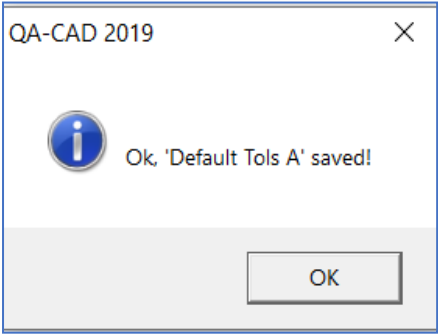
Name: Default Tols A **New** **Rename** **Delete**

Save

Decimal Places	Linear	Angular
X.	0.2	1
X.X	0.1	
X.XX	0.05	
X.XXX	0.025	
X.XXXX		

OK Cancel

Then 'OK, Default Tols A saved' window opens. Press OK button. Then the QA settings window opens. Tick one of the tolerance settings and select Default Tols A in its dropdown menu. Proceed to Step 6.



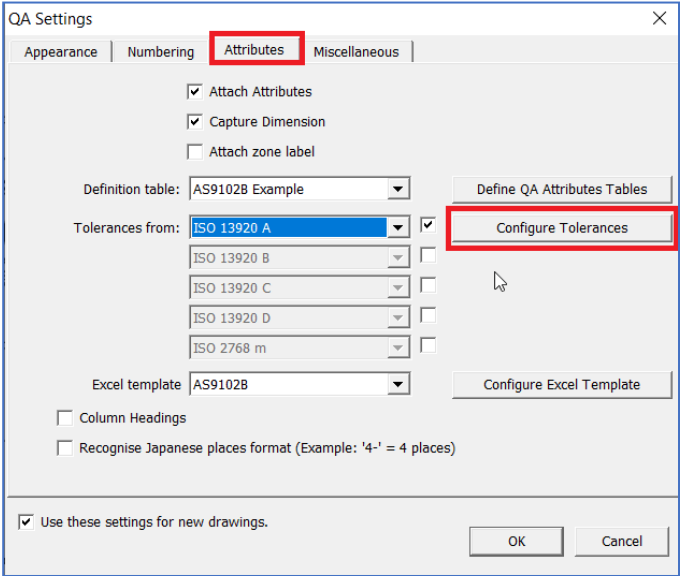
Method 3: Set up and use your Custom Tolerance.



[Click here to watch this section's demo video clip.](#)

If you see the below tolerance requirement table in your drawing, you need to set up your custom tolerance, click Attributes tab and press the configure tolerances button.

DEVIATION ± FOR DIMENSION							
OVER	0.5	3	6	30	120	315	1000
UP TO	3	6	30	120	315	1000	2000
	0.1	0.1	0.2	0.3	0.5	0.8	1.2



Then Manage Tolerances window opens. Click Custom Tolerances Tab. Input the whole tolerance requirement table (for example: if OVER 3, UP TO 6 is 0.1, type 3 in Above column and type 6 in Up to column. Then type -0.1 as a lower tolerance and type 0.1 as an upper tolerance). Please note that the largest 'Up to' cell needs to be blank when we create and save a custom tolerance set. Once you complete to input your required tolerance table, press Save button.

Above	Up to (Including)	Lower Tol	Upper Tol
0	3	-0.1	0.1
3	6	-0.1	0.1
6	30	-0.2	0.2
30	120	-0.3	0.3
120	315	-0.5	0.5
315	1000	-0.8	0.8
1000	2000	-1.2	1.2
2000			

DEVIATION ± FOR DIMENSION							
OVER	0.5	3	6	30	120	315	1000
UP TO	3	6	30	120	315	1000	2000
	0.1	0.1	0.2	0.3	0.5	0.8	1.2

Then 'OK, Custom Example saved' window opens. Press OK button. Then the QA settings window opens. Tick one of the tolerance settings and select Custom Example in the its dropdown menu. Proceed to Step 6 (If you tick the second tolerance tick box from the top, you can configure 2nd tolerance settings. You can set up a maximum of 5 tolerance settings in case of unspecified tolerance).

QA Settings

Appearance | Numbering | Attributes | Miscellaneous

☒ Attach Attributes

☒ Capture Dimension

☐ Attach zone label

Definition table: AS9102B Example

Tolerances from: ISO 13920 A

Excel template: My Sample

☐ Column Headings

☐ Recognise Japanese places format (Example: 1.23456789 places)

☒ Use these settings for new drawings.

Set up your EXCEL template (AS/EN/SJAC9102, PPAP or your inspection report template)



[Click here to watch this section's demo video clip.](#)

Step 6: Tick 'Attach Attributes', 'Capture Dimension', and 'Attach zone label'. Select 'AS/EN/SJAC9102B Example' in Definition table and 'AS/EN/SJAC9102B' in Excel Template (If you want to output to our built-in PPAP Dimensional Test Results form, select PPAP example in Definition table and EXCEL template).

The QA Settings dialog box is shown with the 'Attributes' tab selected. The 'Attach Attributes', 'Capture Dimension', and 'Attach zone label' checkboxes are checked and highlighted with red boxes. The 'Definition table' dropdown is set to 'AS/EN/SJAC9102B Example' and is also highlighted with a red box. The 'Excel template' dropdown is set to 'AS/EN/SJAC9102B' and is highlighted with a red box. The 'Tolerances from' section shows a list of standards with checkboxes: 'Default Tols A', 'ISO 13920 A', 'ISO 2768 m', 'JIS B0403 CT1', and 'Custom Example', all of which are checked. The 'Column Headings' checkbox is unchecked, and the 'Recognise Japanese places format' checkbox is checked. The 'Use these settings for new drawings' checkbox is checked. The 'OK' button is highlighted with a mouse cursor.

Press OK and proceed to Step 6.

However, if you want to output to your EXCEL template file directly, open your EXCEL Template and check start cell and columns.



[Click here to watch this section's demo video clip.](#)

(To learn how to output your EXCEL template file in QA-CAD, you can download the sample First Piece Approval Form EXCEL file from the below link.

<https://www.guthcad.com/tutorials/qa-cad/SampleFirstPieceApprovalForm.xlsx>

Start Cell: A8. Column A is Balloon No. Column B is Dimension. Column C is Upper

The screenshot displays the Microsoft Excel interface with the 'FIRST PIECE APPROVAL FORM' template. The title bar indicates the file is 'Sample First Piece Approval Form.xlsx'. The ribbon includes tabs for File, Home, Insert, Page Layout, Formulas, Data, Review, View, Help, and a search bar. The Home tab is active, showing options for Font, Paragraph, Styles, Cells, and Editing. The spreadsheet area shows a grid with columns labeled A through M and rows 1 through 14. The title 'FIRST PIECE APPROVAL FORM' is centered in the top right. The spreadsheet content includes fields for PART NO., CUSTOMER, REV., MACHINE NO., STOCK SUPPLIER, and GAUGE VERIFICATION. The 'Ballon No' column is highlighted in red, and the 'GAUGES' column is highlighted in blue. The status bar at the bottom shows 'Sheet1' and 'Ready'.

QA Settings

Appearance | Numbering | **Attributes** | Miscellaneous

☒ Attach Attributes

☒ Capture Dimension

☒ Attach zone label

Definition table: AS/EN/SJAC9102B Example

Define QA Attributes Tables

Configure Tolerances

Tolerances from: Default Tols A ☒

ISO 13920 A ☒

ISO 2768 m ☒

JIS B0403 CT1 ☒

Custom Example ☒

Excel template: AS/EN/SJAC9102B

Configure Excel Template

☐ Column Headings

☒ Recognise Japanese places format (Example: '4-' = 4 places)

☒ Use these settings for new drawings.

OK Cancel

Manage Excel templates

Definition table: AS/EN/SJAC9102B Example

Template Name: AS/EN/SJAC9102B

Excel File Name: C:\Users\movie\AppData\Roaming\GuthCAD\QA12\C7\AS_EN_SJAC9102B_ter

Primary sheet: Form3

Start Row: 10 (Cell: A10)

Configure Columns

☐ Store large data to multiple sheets

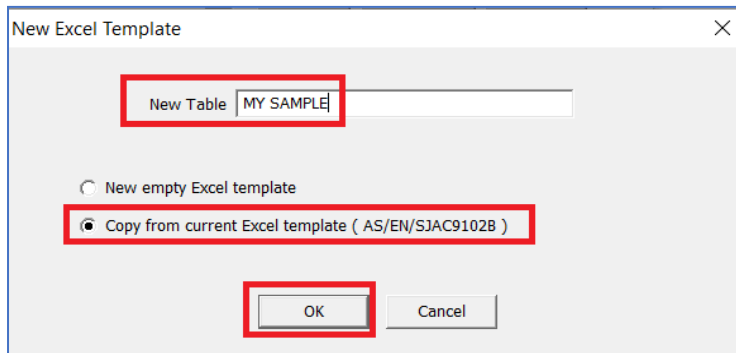
Primary sheet end row: 57

Subsequent sheets start row: 1

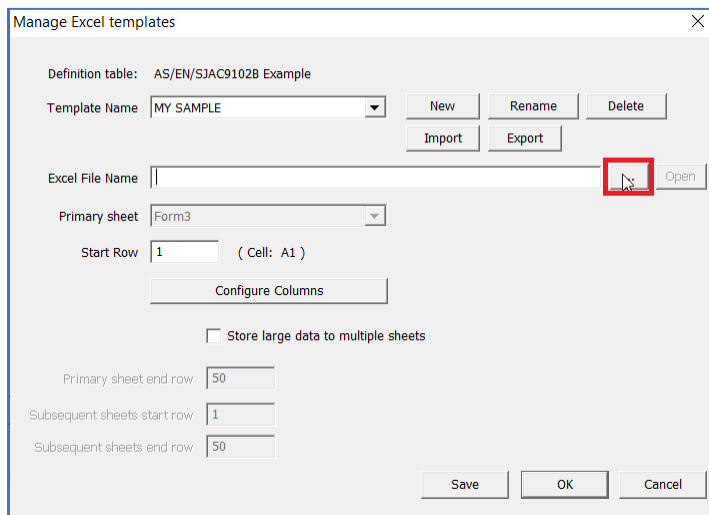
Subsequent sheets end row: 50

Buttons: New, Rename, Delete, Import, Export, Save, OK, Cancel

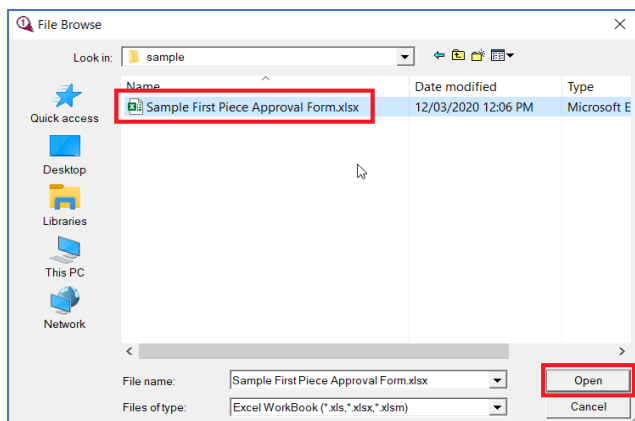
Then select Copy from current EXCEL template and type the template name in New Table Field (typed 'MY SAMPLE' in this below example). Then press the OK button.



Go back to the Manage Excel templates window and click the '...' button next to the Excel File Name input Field (the red rectangle in the below image)



Then select your EXCEL template file ('SampleFirstPieceApprovalForm.xlsx' was selected in the below example image). Press the Open button.



Press the Configure Columns button in the Manage Excel templates window.

Manage Excel templates

Definition table: AS/EN/SJAC9102B Example

Template Name: MY SAMPLE [New] [Rename] [Delete]

[Import] [Export]

Excel File Name: D:\Drawing-Sample\sample\Sample First Piece Approval Form.xlsx [...] [Open]

Primary sheet: Sheet1

Start Row: 1 (Cell: A1)

Configure Columns

☐ Store large data to multiple sheets

Primary sheet end row: 50

Subsequent sheets start row: 1

Subsequent sheets end row: 50

[Save] [OK] [Cancel]

The Configure sheet window opens. In this window, you can set which data is output to which column in an EXCEL template. For example: you can select or change that QA-CAD outputs dimension to Column B.

Configure sheet

Form3

Start column: A

Start row: 8

End row: 35

Large data:

☐ Insert extra rows

☒ Store to extra sheets

Layout from sheet: Form2

Start row: 1

End row: 50

A	B	C	D	E	F	G	H
Balloon/Item No.	[Zone/Location]	Char. Designator	Dimension	Upper Tolerance	Lower Tolerance	UoM	Pass / Fail
I	[Zone/Location]						
Inspection Tool U	Dimension	Comments					

[OK] [Cancel]

Type A in the Start Column and type 8 in the Start Row. Then change Column B to select Dimension in the dropdown menu. (Previously we checked the EXCEL template output cell requirement at page8. Start Cell is A8. Column A is Balloon No. Column B is Dimension. Column C is Upper Tolerance. Column D is Lower Tolerance).

Also change Column C to Upper Tolerance.

Configure sheet

Form3

Start column: A
Start row: 8
End row: 35

Large data:
☐ Insert extra rows
☒ Store to extra sheets

Layout from sheet:
Start row:
End row:

A	B	C	D	E	F
Balloon/Item No.	Dimension	Char. Designator	Dimension	Upper Tolerance	Lower Tolerance
I	J	K			
Inspection Tool U	Non-conformance	Upper Tolerance			

OK Cancel

By the way, as you see from the above image, you can change or edit output attributes data. You can also insert another column, delete this column or make this column blank. if you select Max Dimension here, you can output maximum dimension (dimension plus upper tolerance). If you select Min Dimension here, you can output minimum dimension (dimension plus lower tolerance).

Then change Column D to Lower Tolerance.

Configure sheet

Form3

Start column: A
Start row: 8
End row: 35

Large data:
☐ Insert extra rows
☒ Store to extra sheets

Layout from sheet:
Start row:
End row:

A	B	C	D	E	F
Balloon/Item No.	Dimension	Upper Tolerance	Dimension	Upper Tolerance	Lower Tolerance
I	J	K			
Inspection Tool U	Non-conformance	Comments	Lower Tolerance		

Cancel

Delete the rest of the columns (From column E to column K).

Then press the OK button (In the below example, QA-CAD outputs balloon number to column A, dimension to column B, upper tolerance to column C and lower tolerance to column D in a selected EXCEL template).

Then QA Settings window opens. Select 'MY SAMPLE' in the EXCEL template, press the OK button, and proceed to step 6.

(We recorded the whole software operation procedure from page 8 to page 13 as a video clip file and uploaded it as a YouTube video. Please click the below link to open our Tutorial web page and view the tutorial video about how to customize the EXCEL template.)

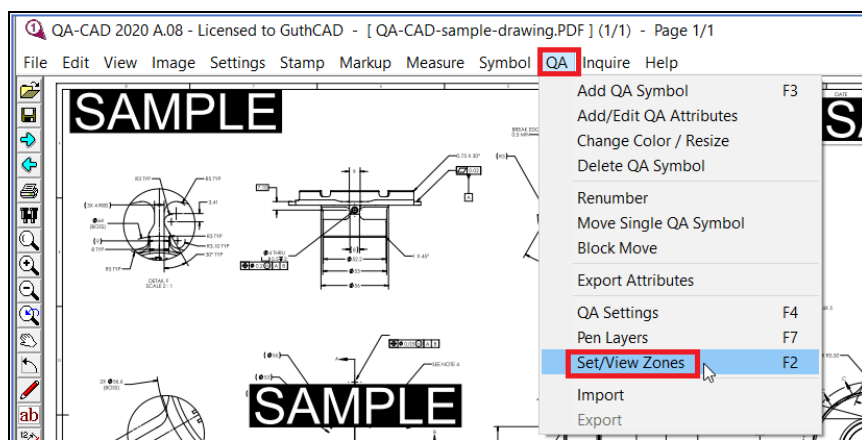
<https://www.guthcad.com/tutorials/qa-cad/export-data-to-customised-EXCEL-tutorial-QA-CAD.html>

Set up reference zone and edit drop-down menu

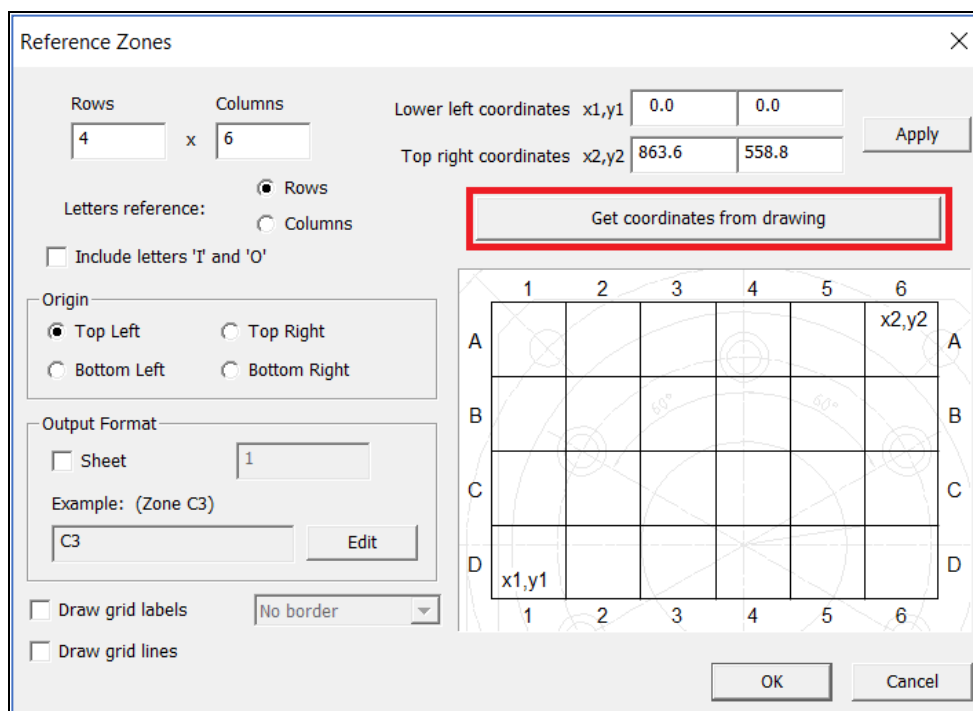


[Click here to watch this section's demo video clip \(set up reference zone\).](#)

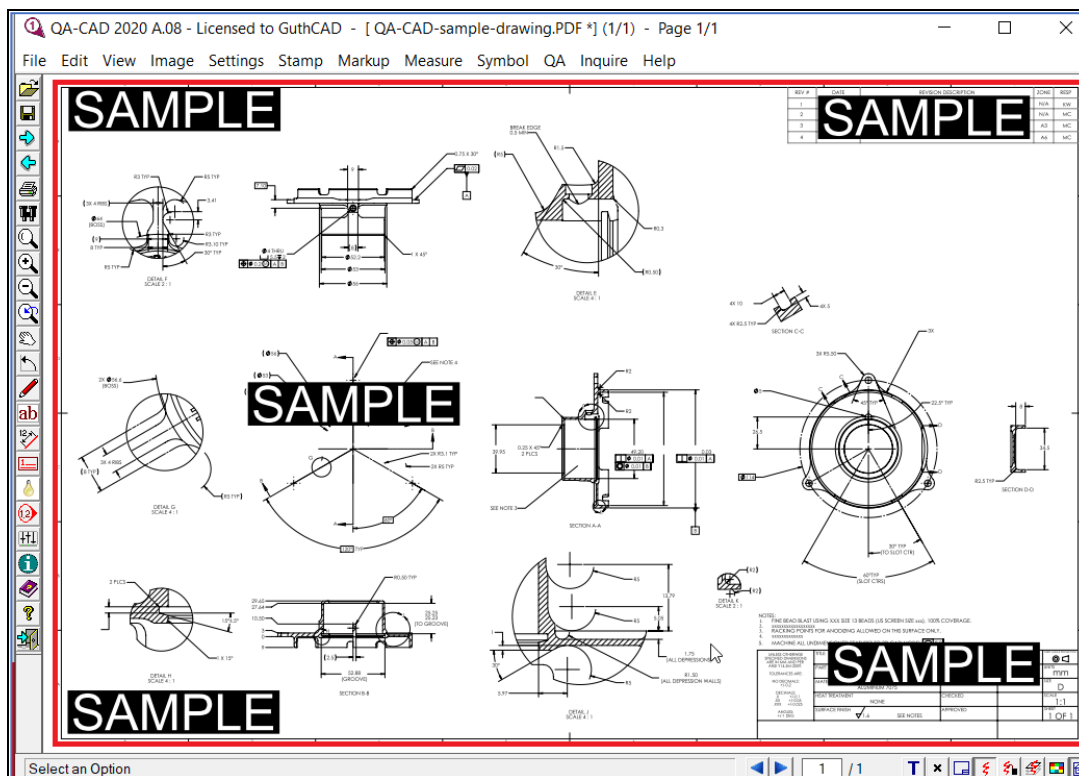
Step 7: Select QA > Set/View Zones (If you do not need to reference location, proceed to step 11).



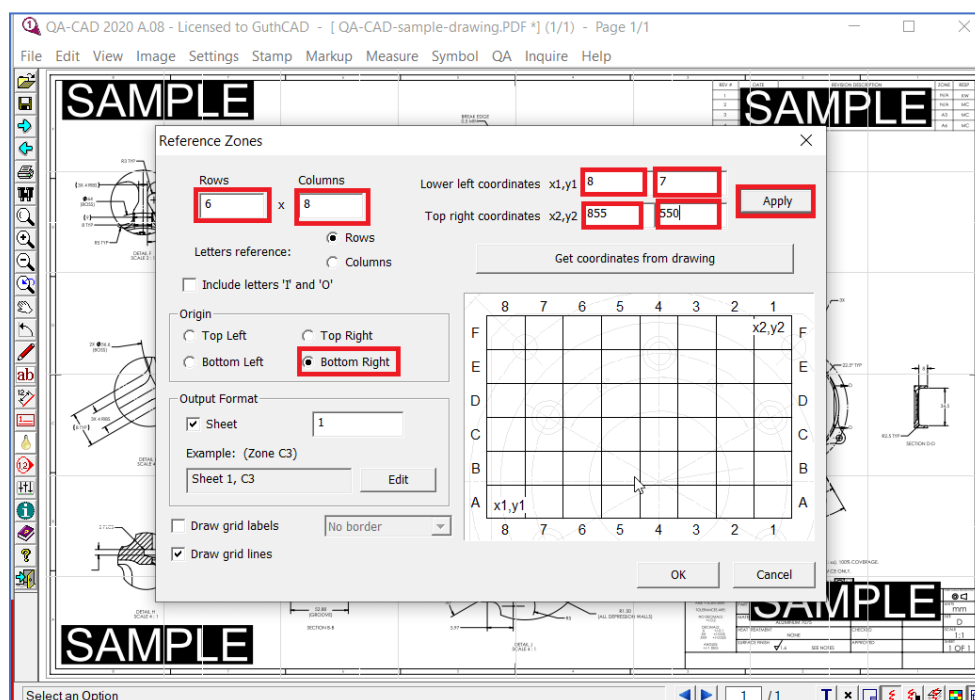
Step 8: A Reference Zones window opens. Press 'Get coordinates from drawing'.



Step 9: Select whole edge of the drawing from left top to right bottom (actually you select edges with black line in QA-CAD. The red lines in the below image are for your reference.) Then left click once.



Step 10: Go back to Reference Zones window. Change Rows, Columns, Letters reference and Origin depends on your drawing (In this same drawing, Rows: 6, Columns:8, Origin is Bottom Right). Adjust x1, y1, x2, y2 and press Apply until the grid lines align with the drawing zone (In this same drawing, x1: 8, y1:7, x2:855, y2:550). Then press OK.



Also we can modify the existing drop-down menu lists and create a new drop-down menu list in QA-CAD software.



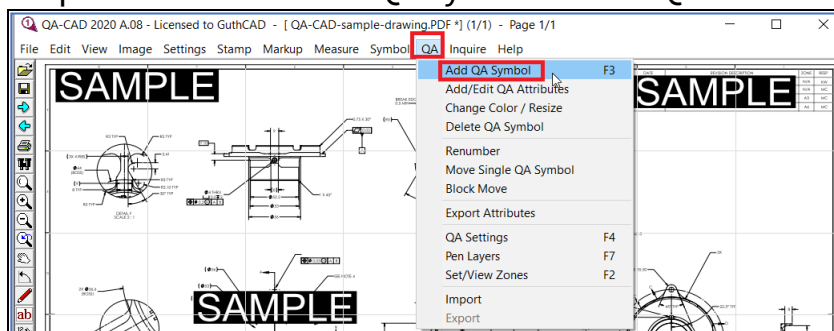
[Click here to watch this section's demo video clip \(how to edit drop-down menu\)](#)

How to extract individual dimension, tolerance, and notes from text-selectable PDF or AutoCAD files

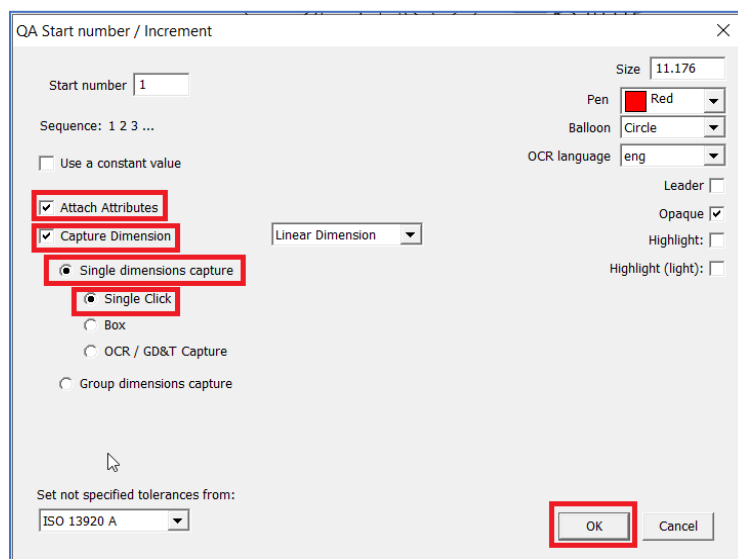


[Click here to watch this section's demo video clip.](#)

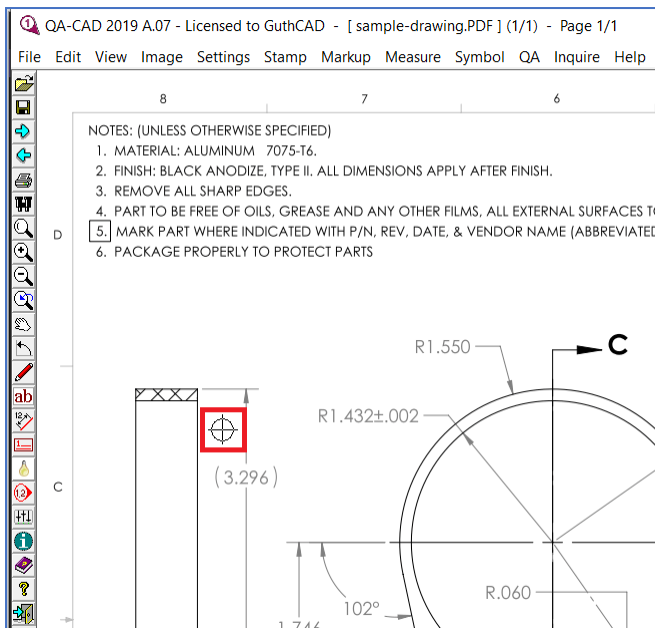
Step 11. Now click 'Add QA symbols' from QA menu.



Step 12: Tick Attach Attributes and Capture Dimension Value. Select 'Single dimension capture' and 'Single Click' as a capture method (If you want to do auto ballooning, proceed to page21). Press the OK button.



Step 13: Your mouse pointer changes and looks like a circle with a plus sign on the software (as you can see the circle inside the red rectangle in the below image). In this mode, you can draw balloons on the drawing. Move the circle to where you would like to place a balloon and left-click once. Then the circle is placed.



Step 14: You can move the plus sign to a dimension value (or text) you would like to capture (in this example, the plus sign moved towards 3.296). Left-click twice. The target value is captured and displayed in Dimension field on Add/Edit QA Symbol Attribute window. Press OK button (complete one balloon and its attributes setting).

Image 14-1. Move the plus sign to a dimension value (or text) you want to capture. Left-click once.

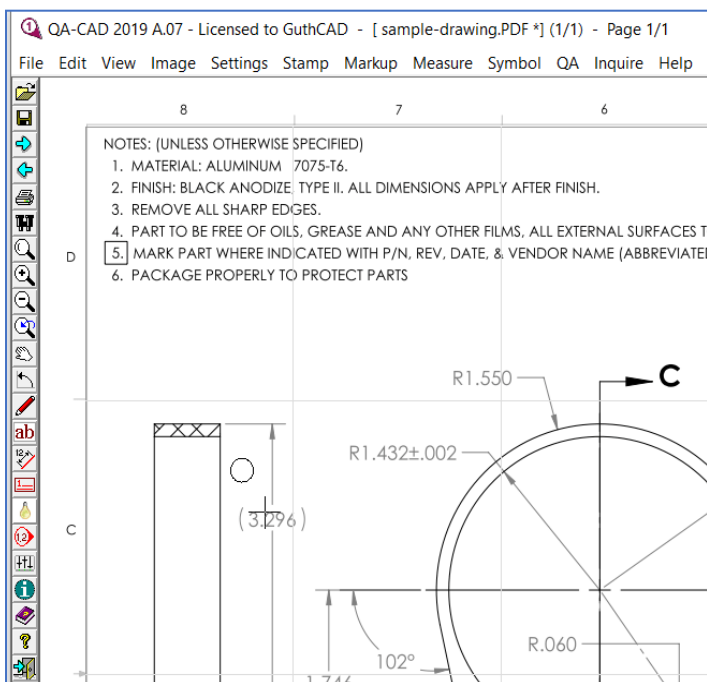


Image 14-2. The red balloon is displayed. Left-click once again.

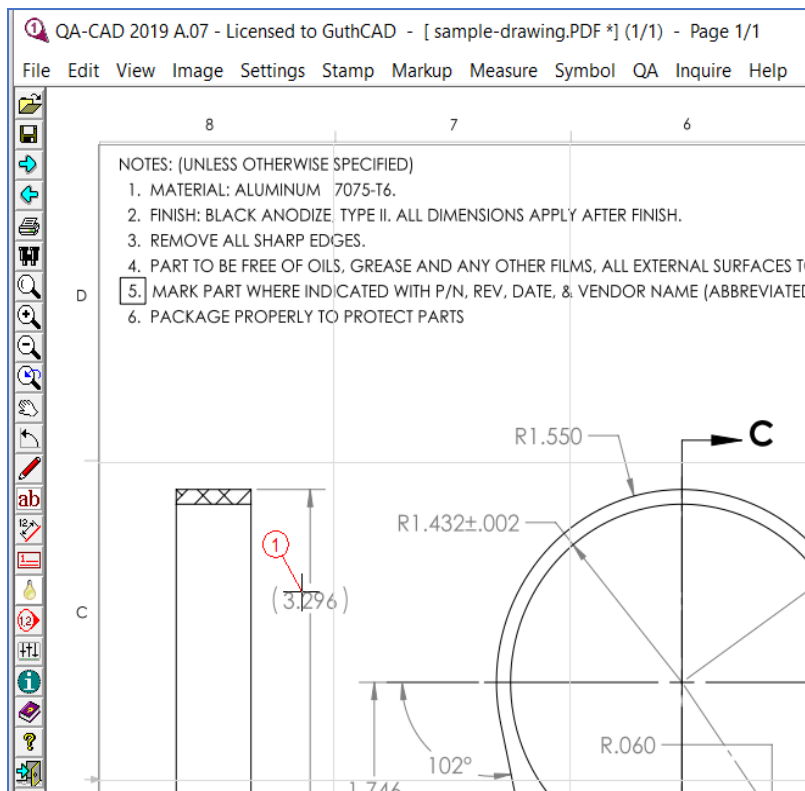
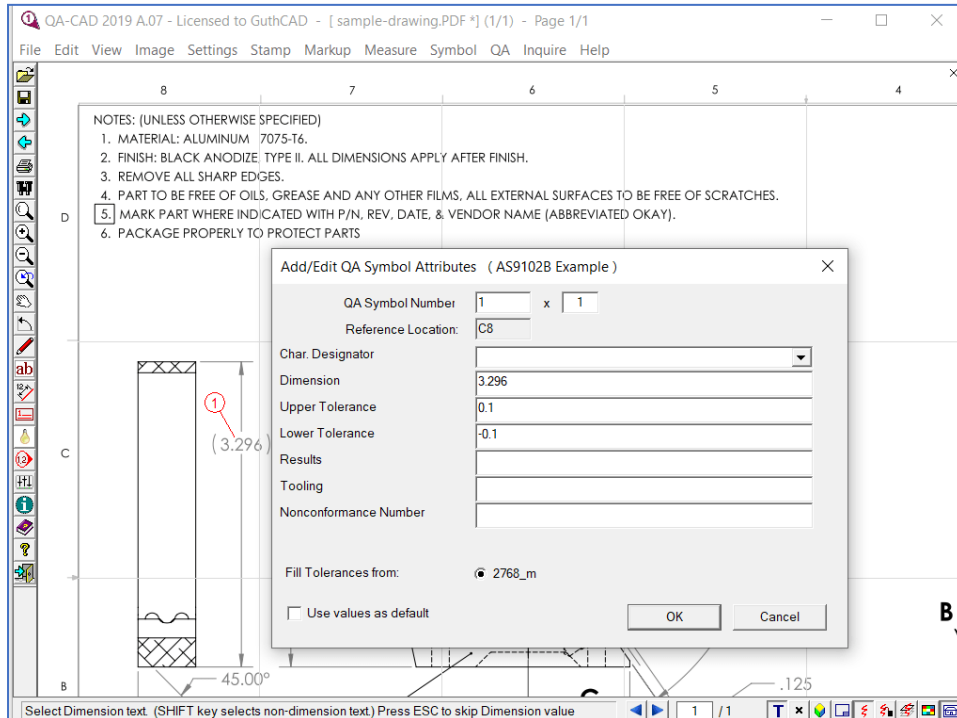


Image 14-3. The target value is captured and displayed in Dimension field on Add/Edit QA Symbol Attribute window. Press OK button. The upper and lower tolerances are automatically entered by your tolerance settings. (In the below image, the Upper and Lower Tolerances were filled from 2768_m, one of QA-CAD's ISO standard tolerance tables).



[Select File > Save Markup Edits to save the work ballooned drawing.]

With the single click method, you can extract both horizontal PDF text and vertical PDF text, if your drawing is text-selectable PDF file or AutoCAD file.

When use the Box method? capturing a dimension with a “deviation” tolerance format or angular PDF text from text-selectable PDF



[Click here to watch this section's demo video clip.](#)

Image14-4. Click Add QA symbol from the QA menu. Select 'Single dimension capture' and 'Box'. Then press the OK button in the QASStart Number window.

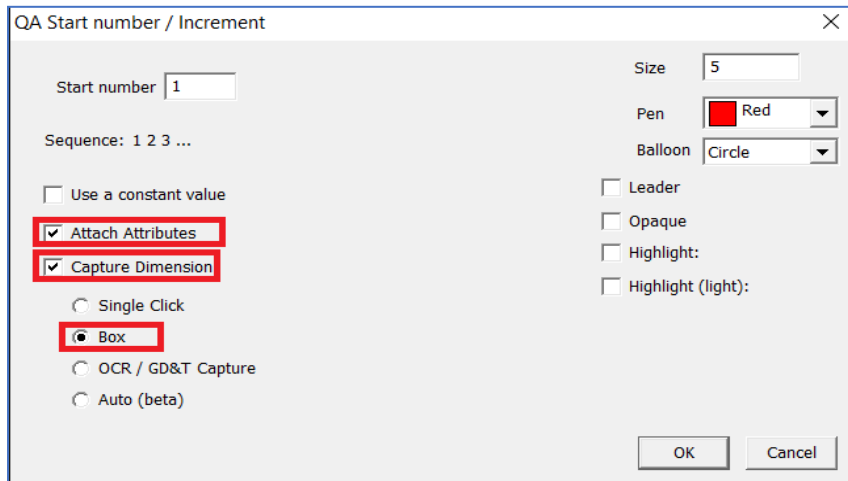
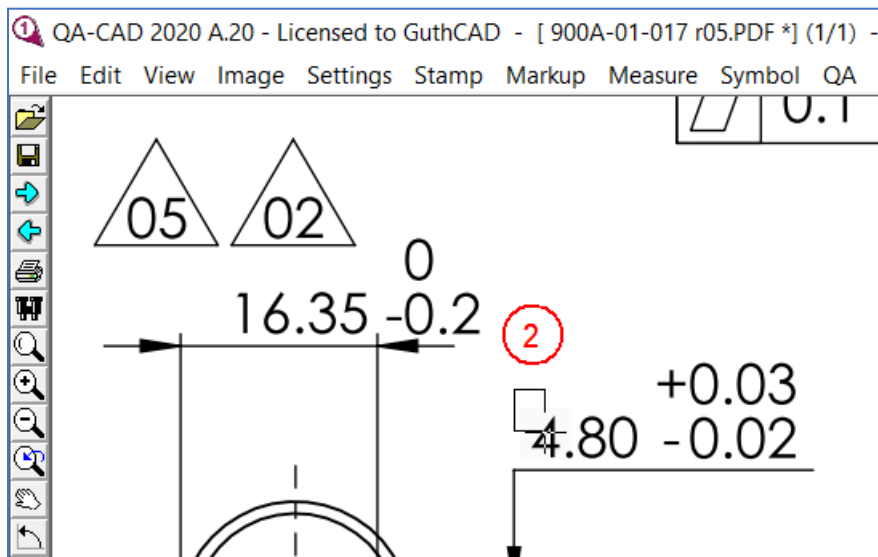


Image 14-5. Same as the single-click method. Place a balloon first. Then press the left-click button and hold it to cover dimension, upper tolerance, and lower tolerance by drawing the rectangle.



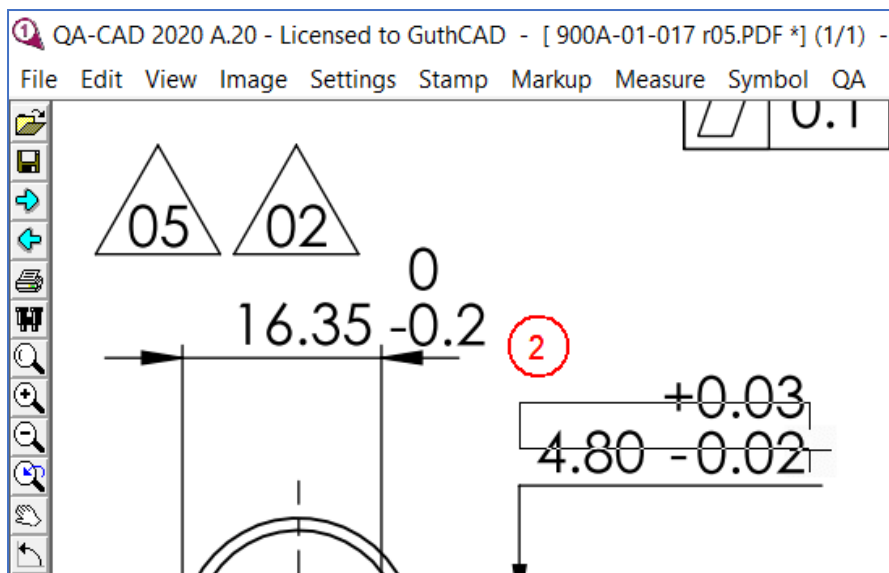


Image 14-6. Left-click again. Then the dimension, the upper tolerance, and the lower tolerance are extracted from the PDF and inserted into each data field automatically.

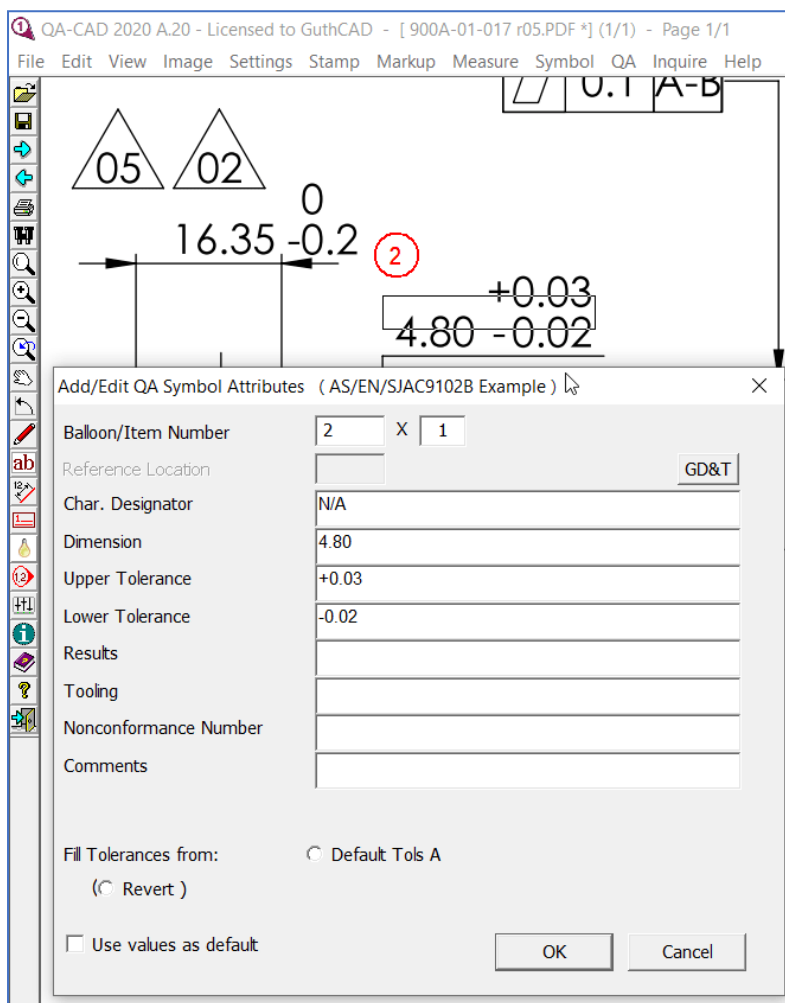
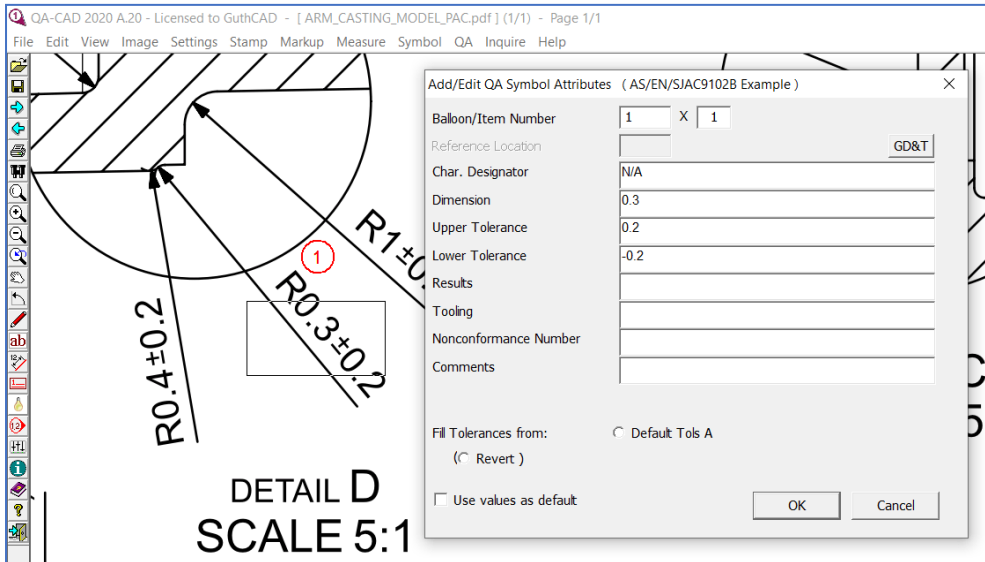


Image 14-7. For angular PDF text, you need to do the same box method operation.



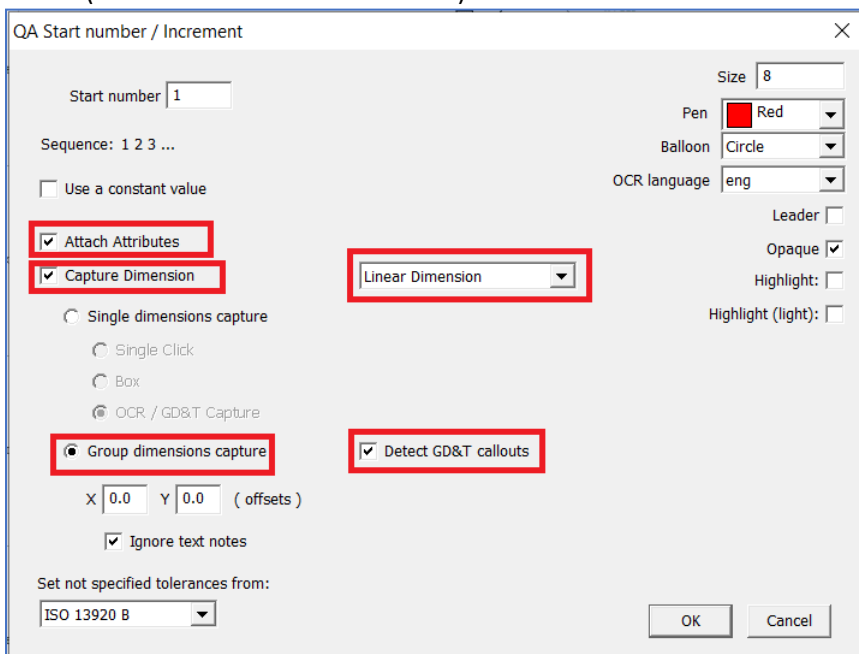
[Select File > Save Markup Edits to save the work ballooned drawing.]
proceed to Step 24.

How to do auto ballooning PDF, raster image files, or DWG / DXF (How to use Group dimension capture feature)



[Click here to watch this section's demo video clip.](#)

Image 14-8. Click Add QA symbol from the QA menu. Select 'Group dimensions capture' and 'Detect GD&T Callouts'. Then select 'Linear Dimension' and press the OK button (With the Linear Dimension mode,QA-CAD can capture limits of size (maximum and minimum limits).



(If you use an image-only PDF or image file, Group dimensions capture (OCR) is displayed. Proceed to Image 14-13 on page25 in this case.)

Image 14-9. Move a mouse pointer to the left top of the capture target group (R2, R0.35-0.25, R2, $\varnothing 40.05-39.95$, $0.25 \times 45^\circ$, $\varnothing 49.22-49.20$, $\varnothing 94.02-93.98$ and $\varnothing 98 \text{ g}6$ in the below image example).

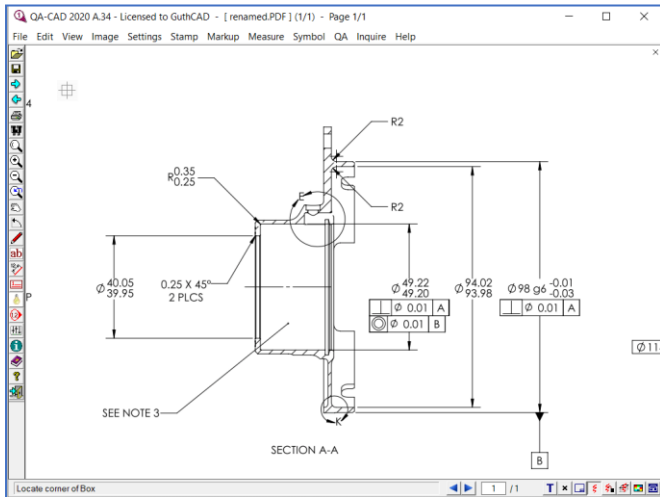


Image 14-10. Press the left-click button and hold it. Then you can enclose the capture targets by drawing the rectangle.

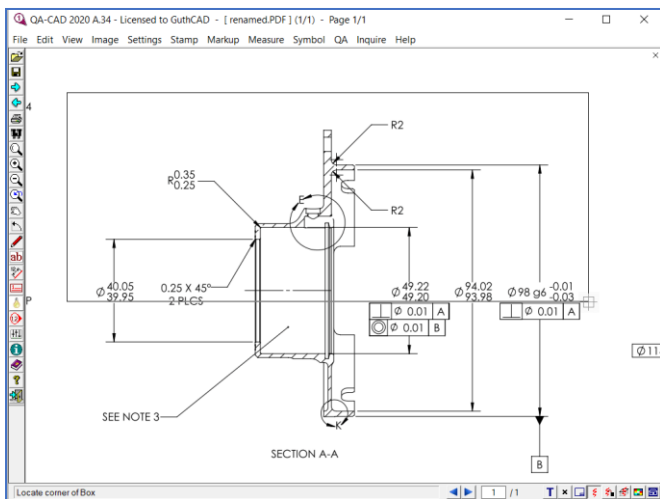
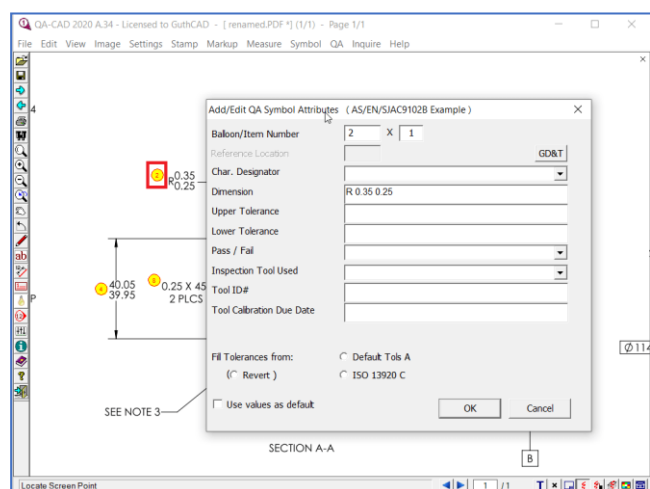
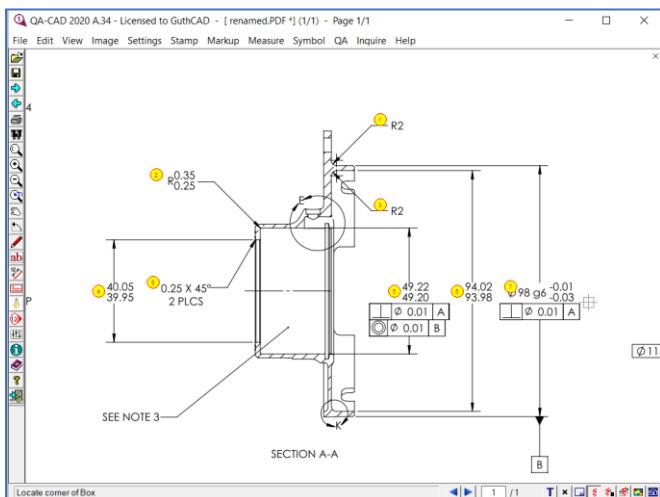


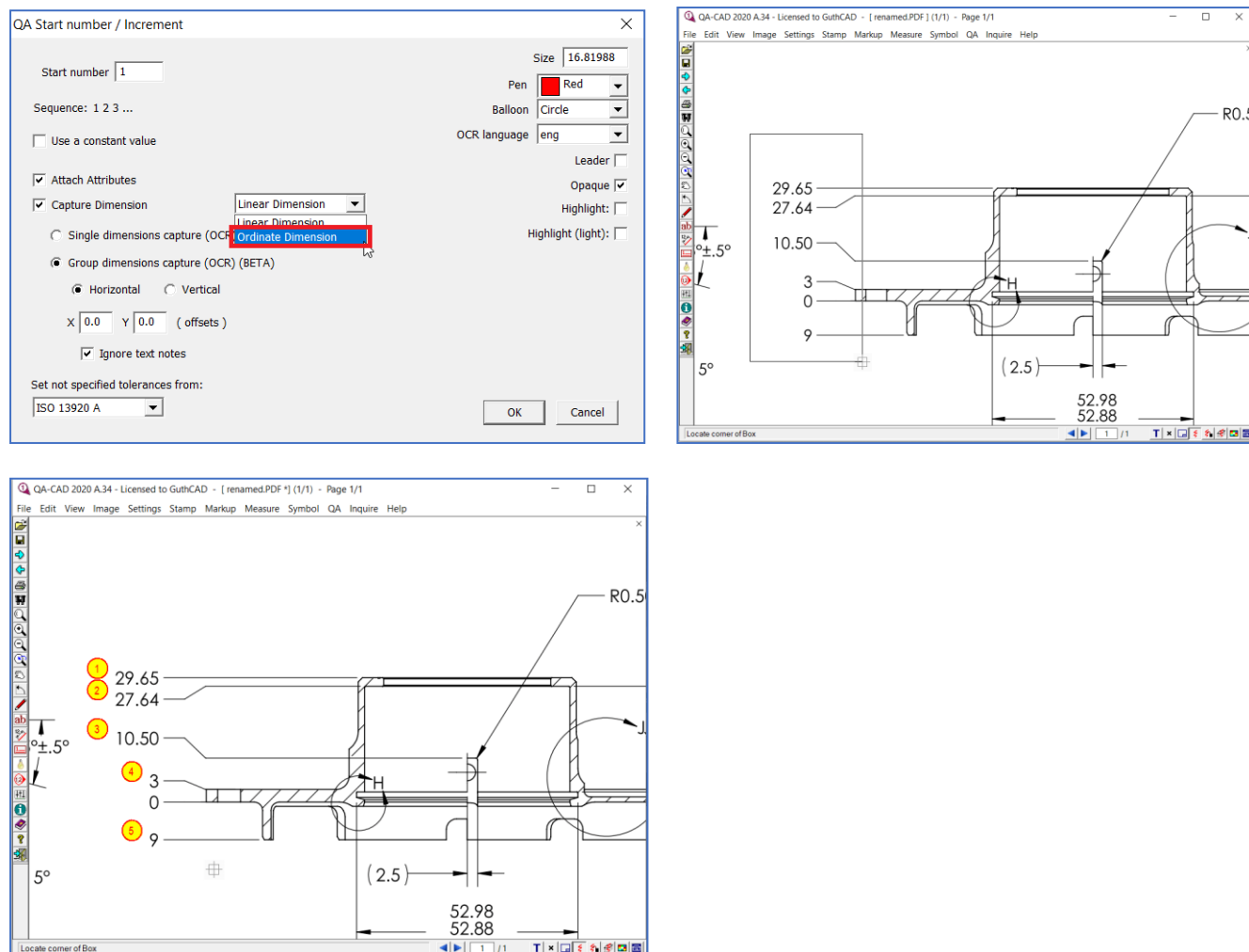
Image 14-11. Once you complete to enclose the targets by the rectangle, double click. Then QA-CAD instantly draws automated balloons to all selected targets. At the same time, QA-CAD extract dimensions, tolerances, GD&T features control frame, or notes from the drawing. With just a few button operations, QA-CAD can balloon specific page areas.



[Select File > Save Markup Edits to save the work ballooned drawing.] If you click one of the



balloons, you can confirm what information balloon stores such as dimension, upper tolerance, lower tolerance, notes, and GD&T features control frame.

Image 14-12. If you need to capture ordinate dimension, select 'Ordinate Dimension' and do auto ballooning.



If you have unnecessary balloons, select 'Delete QA symbol' from QA menu and click the unnecessary balloons to delete. If you need to fix deleted balloon number(s) in the balloon number sequence, select 'Renumber' from QA menu. The balloon number sequence will be fixed (example [1,2,4,5,7,8,10] --> [1,2,3,4,5,6,7]).
 proceed to Step 24.

Image 14-13. If you use image-only PDF or image files, you can see ‘Group dimensions capture (OCR) (BETA)’ in the QA Start number window. Select ‘Group dimensions capture(OCR)’.

	Click here to watch this section's demo video clip (PART1).
	Click here to watch this section's demo video clip (PART2).

QA Start number / Increment

Start number

1

Sequence:

1 2 3 ...

☐ Use a constant value

☒ Attach Attributes

☒ Capture Dimension

Linear Dimension

☐ Single dimensions capture (OCR)

☒ Group dimensions capture (OCR) (BETA)

☒ Horizontal
 ☐ Vertical

X

0.0

Y

0.0

(offsets)

☒ Ignore text notes

Set not specified tolerances from:

ISO 13920 A

Size

16.81988

Pen

Red

Balloon

Circle

OCR language

eng

Leader

☐

Opaque

☒

Highlight:

☐

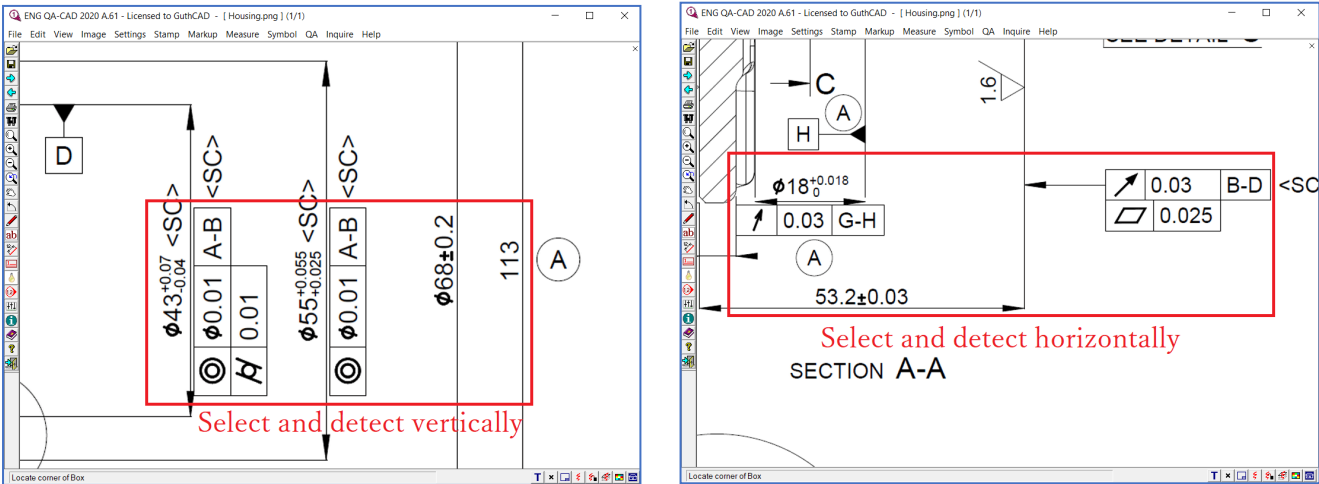
Highlight (light):

☐

OK

Cancel

Image 14-14, 14-15. Then select Horizontal or Vertical as the OCR capture direction. If you select ‘Horizontal’, our OCR program detects targets only horizontally. If you select ‘Vertical’, our OCR detects targets only vertically. Please note that our OCR program can not detect horizontally and vertically at the same time.



After you select ‘Horizontal’ or ‘Vertical’, press the OK button.

Image 14-16. Now it is time to select targets (dimensions, tolerances, and GD&T feature control frames). Please note that we should avoid selecting and including the CAD model in the OCR selection rectangle. If you include the CAD

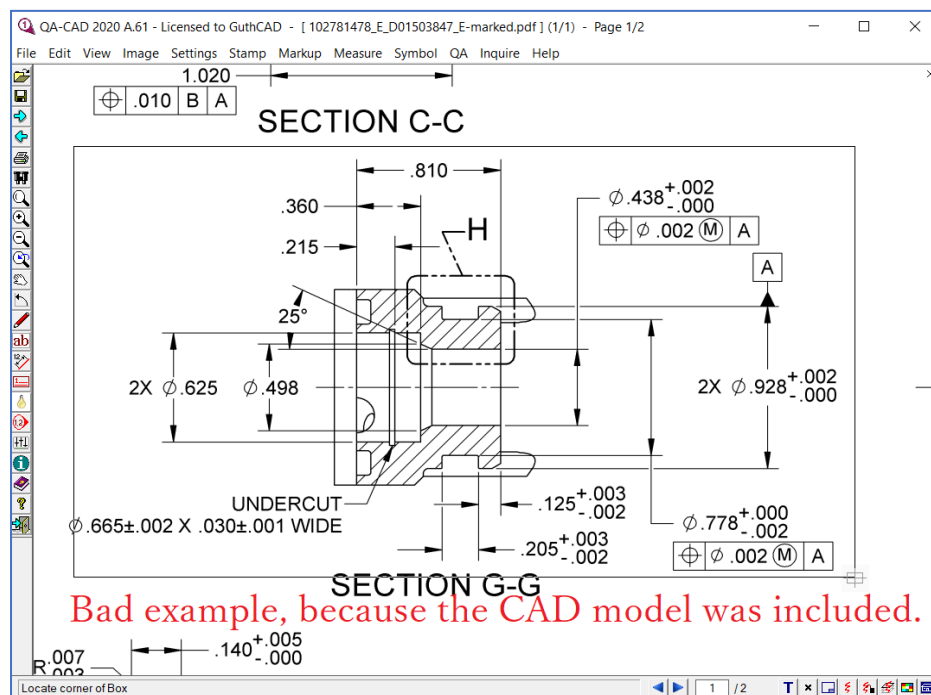


Image 14-17. To avoid selecting the CAD model, divide the targets into 3 or 4 groups (for example: upper part, right part and left part). Select each group individually without including the CAD model as much as possible, as you can see from the below example image.

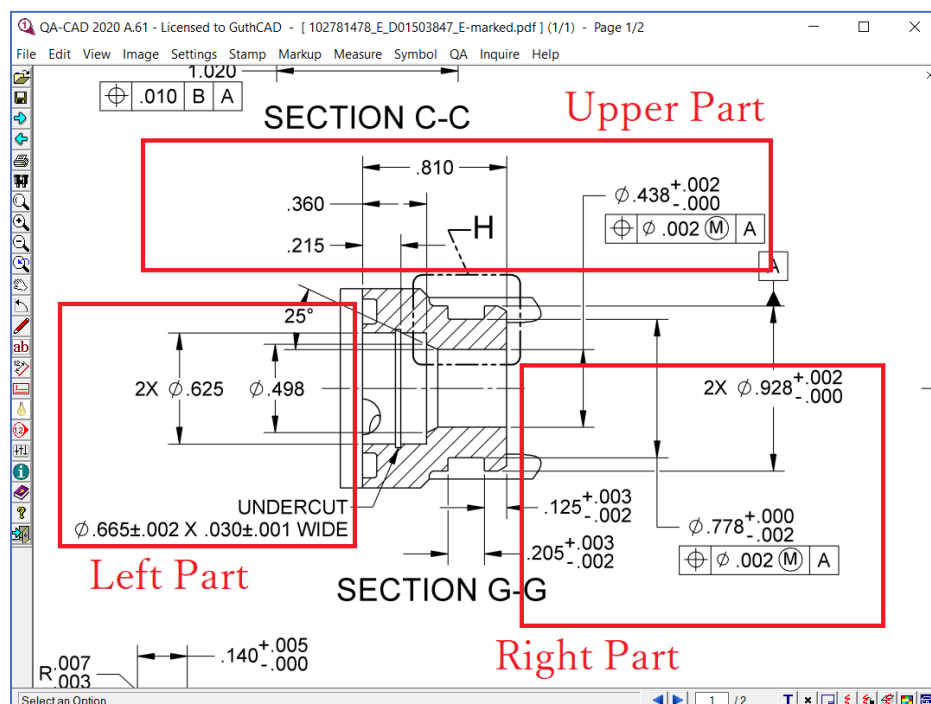


Image 14-18. Let's capture the Upper Part. Move a mouse pointer to the left top of the capture target group (.810, .360, .215, $\varnothing.438^{+.002}_{-.000}$, GD&T features control frame in the below image example). Press the left-click button and hold it. Then you can enclose the capture targets by drawing the rectangle.

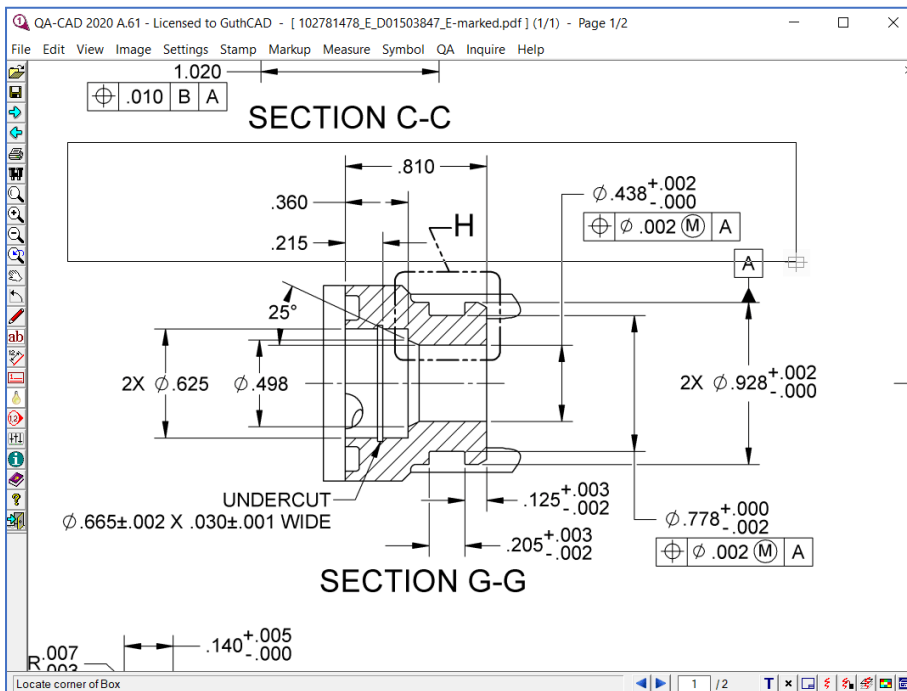
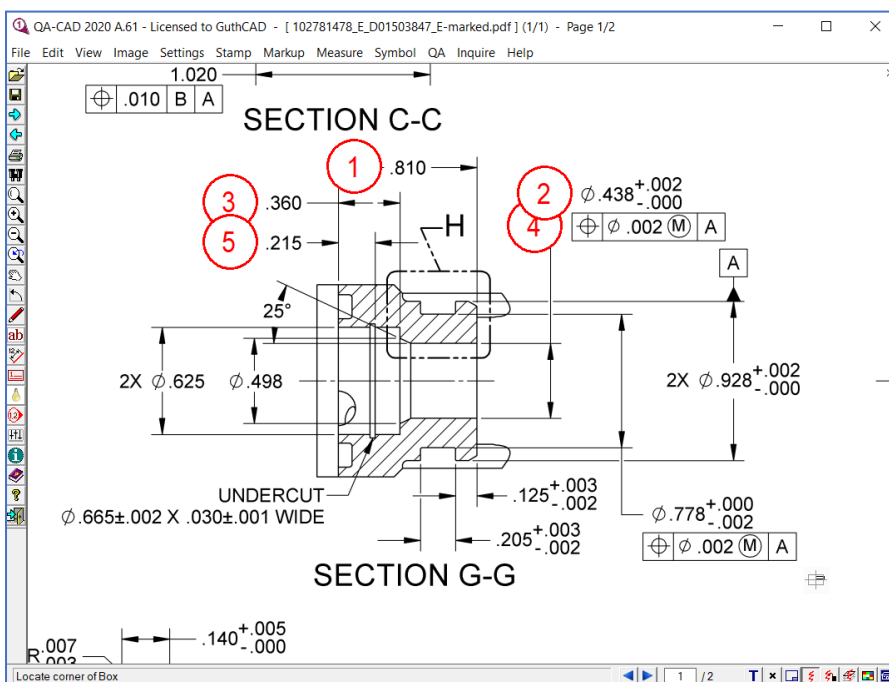


Image 14-19. Once you complete enclosing the targets by the rectangle, left click. Then QA-CAD instantly draws automated balloons to all selected targets. At the same time, QA-CAD extract dimensions, tolerances, GD&T features control frames from the drawing. (You can also undo last auto-balloon with [Ctrl-Z], but only if you do straight after the operation.)



QCAD 2020 A.61 - Licensed to GuthCAD - [102781478_E-D01503847_E-marked.pdf] (1/1) - Page 1/2

File Edit View Image Settings Stamp Markup Measure Symbol QA Inquire Help

1.020

SECTION C-C

1

2

3

4

5

25°

2X $\phi .625$

$\phi .498$

UNDERCUT

$\phi .665 \pm .002$ X $.030 \pm .001$ WIDE

SECTION G-G

$\phi .438^{+.002}_{-.000}$

$\phi .002$ (M) A

$\phi .778^{+.000}_{-.002}$

$\phi .002$ (M) A

$.125^{+.003}_{-.002}$

$.205^{+.003}_{-.002}$

$2X \phi .928^{+.002}_{-.000}$

$.140^{+.005}_{-.000}$

R.007

Locate corner of Box

Image 14-22. If you double-click a balloon, you can check what dimension and tolerance (or GD&T) the balloon stores.

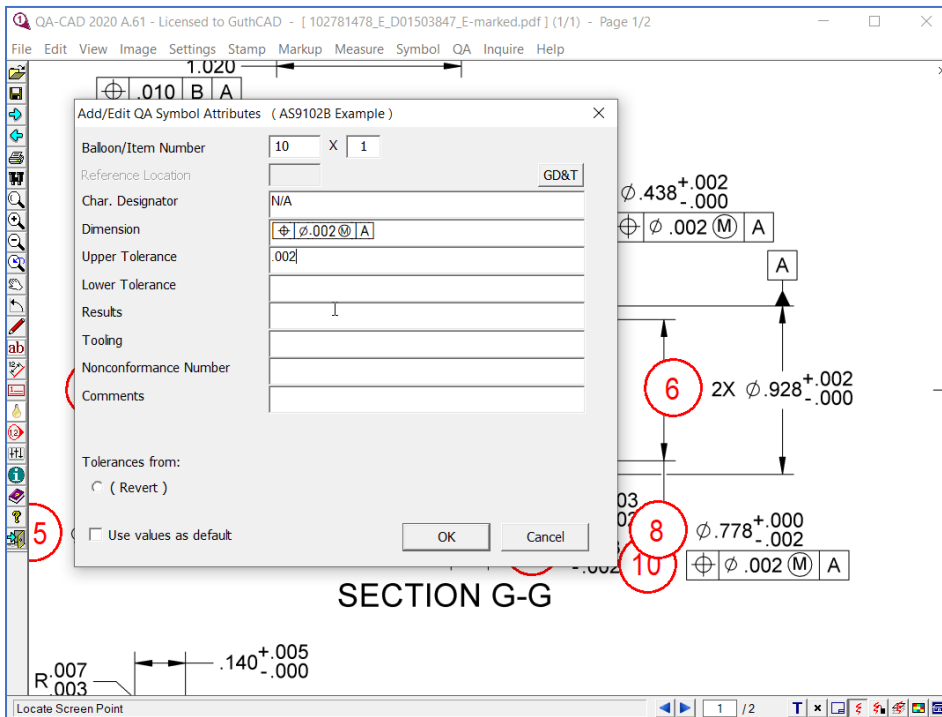
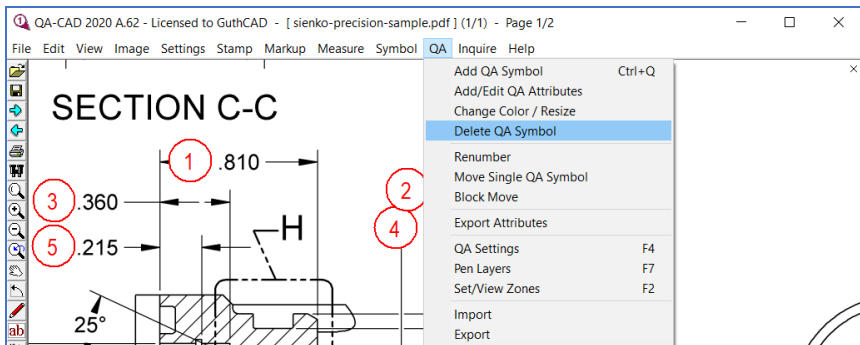


Image 14-23. If you find un-ballooned target(s) after using the 'Group dimensions capture (OCR) (BETA)' feature, please make sure of re-capturing by the Single dimension capture (OCR) method. Or if you find wrong OCR results(wrong dimension / tolerance, GD&T), please select 'Delete QA Symbol' from the QA menu and click a balloon that stores the wrong result to delete it. Then re-capture by the Single dimension capture (OCR) method.



Please remember that you can not re-capture the un-ballooned target(s) or wrong OCR results by using 'Group dimensions capture (OCR) (BETA)', once you did auto ballooning by 'Group dimensions capture (OCR) (BETA)'. You need to use the Single dimension capture (OCR) method.

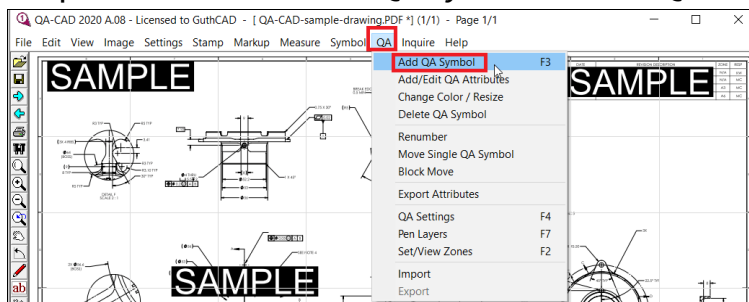
Please refer to page 30 for how to use the Single dimension capture (OCR) method. If you need to fix deleted balloon number(s) in the balloon number sequence, select 'Renumber' from QA menu. The balloon number sequence will be fixed (example [1,2,4,5,7,8,10] --> [1,2,3,4,5,6,7]).

How to capture individual dimension, tolerance, notes and GD&T features control frame from image only PDF or image files (TIFF, JPEG, etc.) with OCR method (single dimensions capture method)

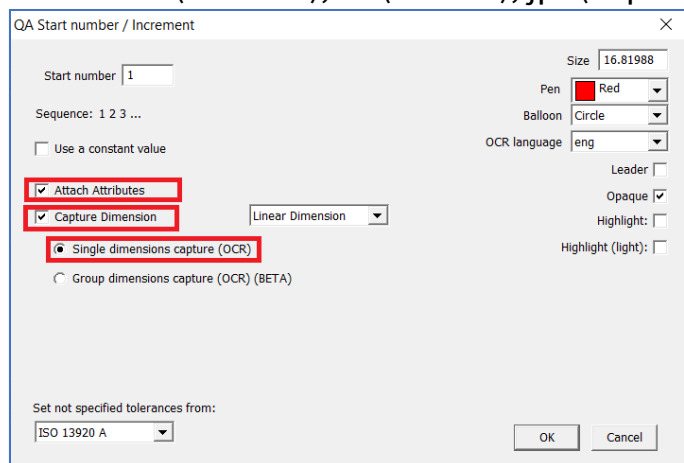


[Click here to watch this section's demo video clip.](#)

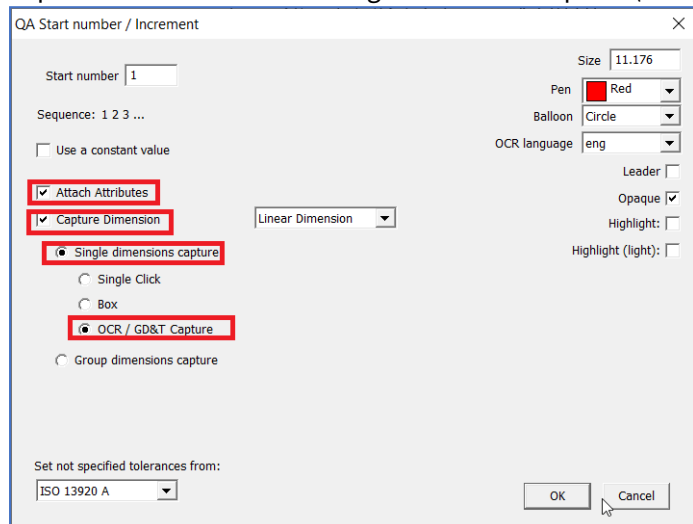
Step 15: Now click 'Add QA symbols' from QA menu.



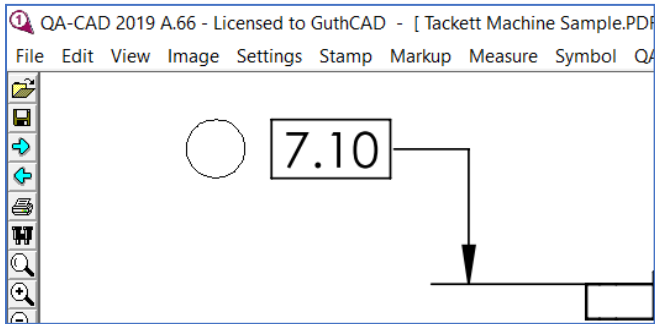
Step 16: Tick Attach Attributes and Capture Dimension. Select 'Single dimension capture (OCR)'. Then press OK button. The default OCR language setting is eng (English). You can choose deu (German), fra(French), jpn(Japanese). You can add other languages.



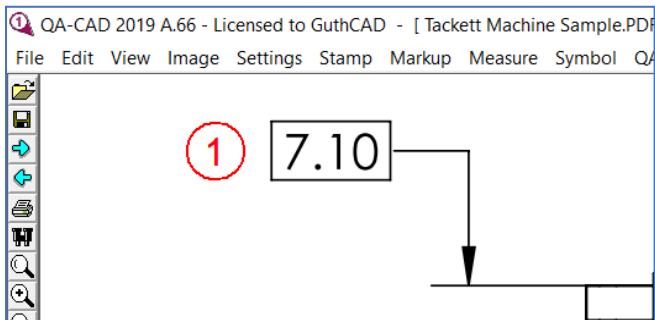
If you open text-selectable PDFs (PDF files with native text), you can see the below window. Tick Attach Attributes and Capture Dimension. Select 'Single dimension capture (OCR)' and 'OCR/GD&T Capture'. Then press OK button.



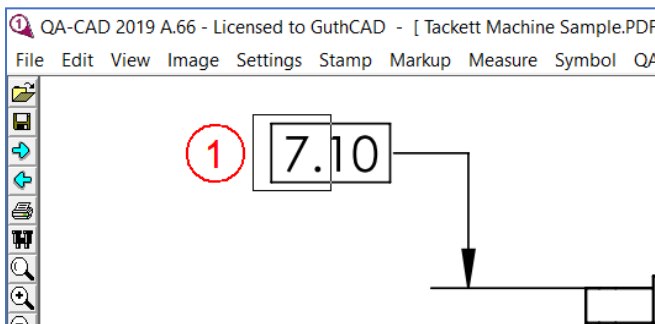
Step 17: Move a mouse pointer to where you want to place a balloon (bubble) and left-click.



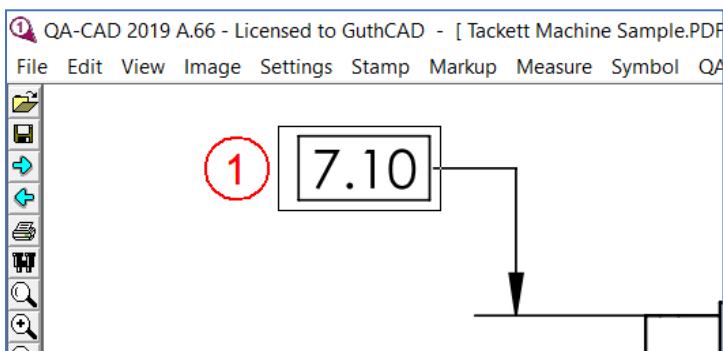
Then the red balloon is placed.



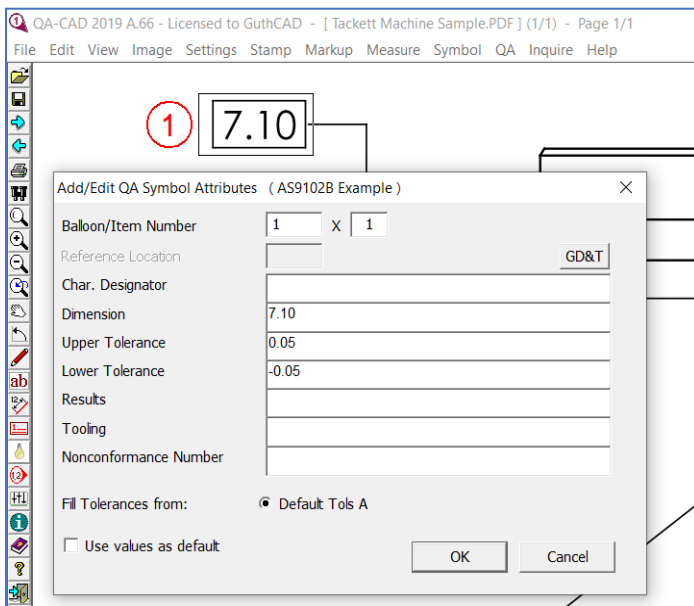
Step 18: Move the plus sign close to your OCR target. Press a left-click button and hold it. Now you can draw a rectangle to enclose target (7.10 is the target in the below image).



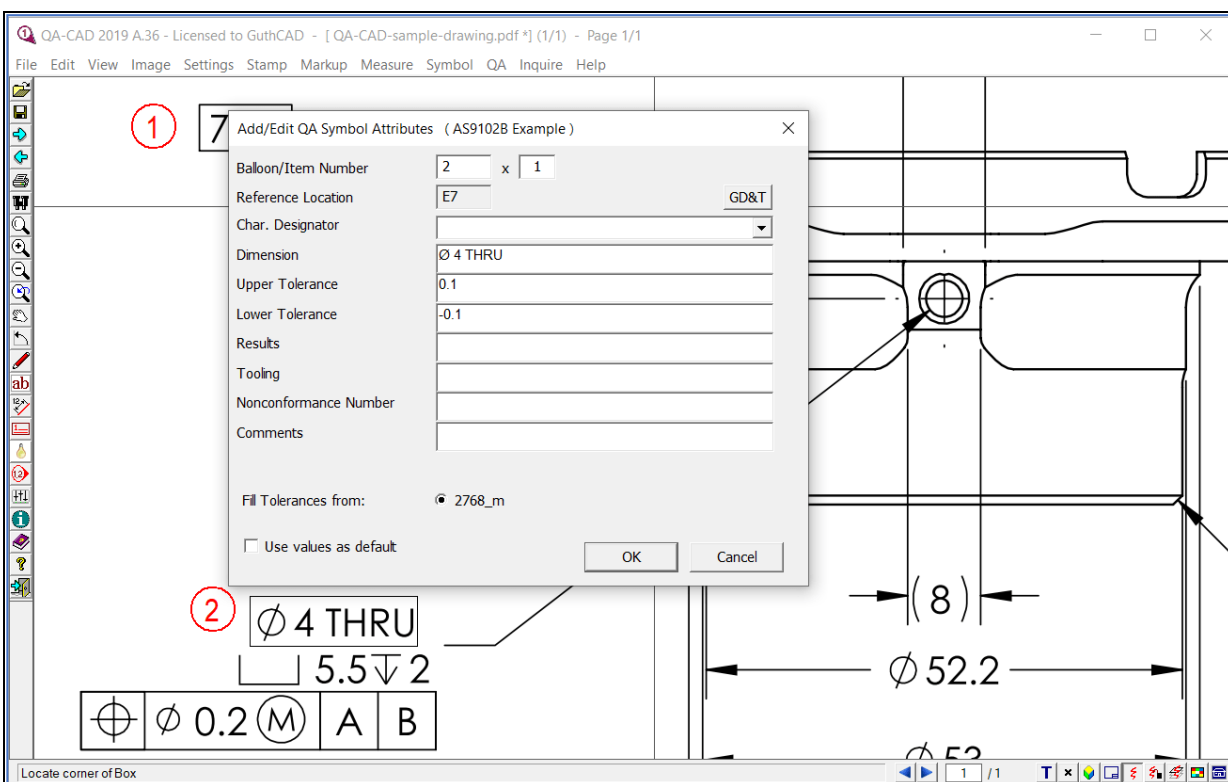
Once you complete to draw the rectangle, left click twice.



Step 19: After that, 'Add/ Edit QA symbol attributes' window opens. You can see the dimension you selected in Step 13 is inserted in the attributes table. The upper and lower tolerances are automatically entered by your tolerance settings. (In the below image, the Upper and Lower Tolerances were filled from Default Tols A set).

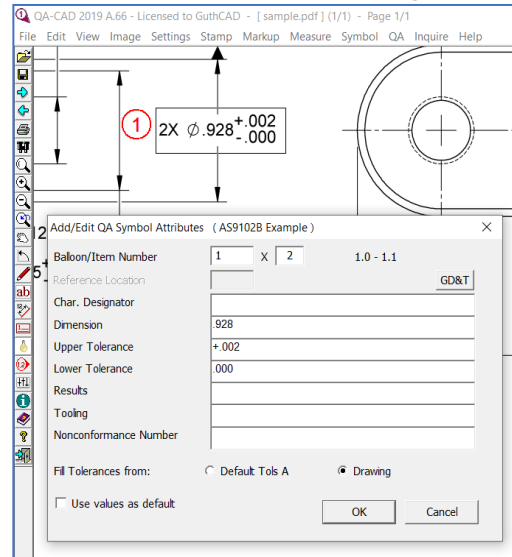
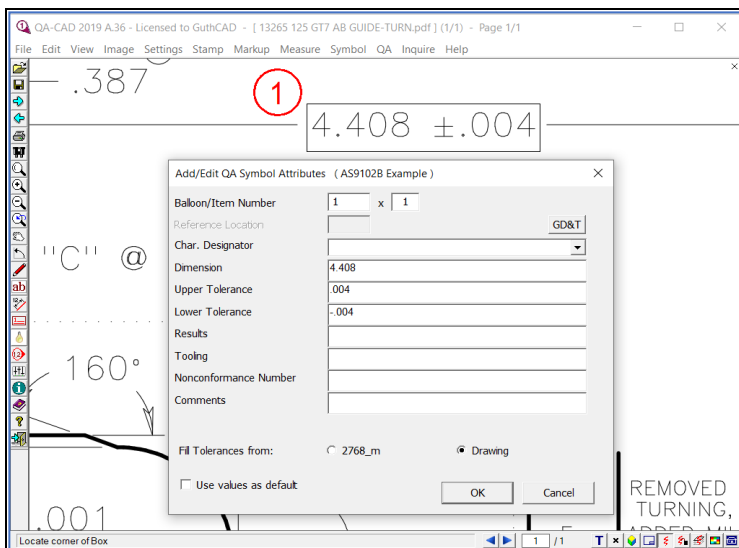


Step 20: Then place another balloon and repeat the same step to capture dimension or text note.

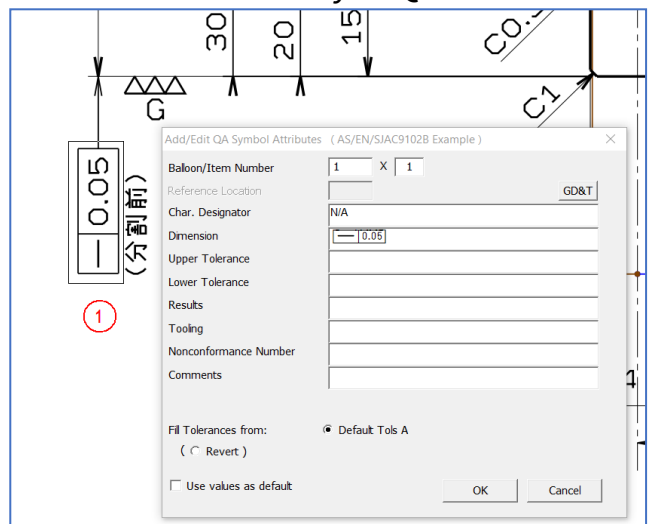
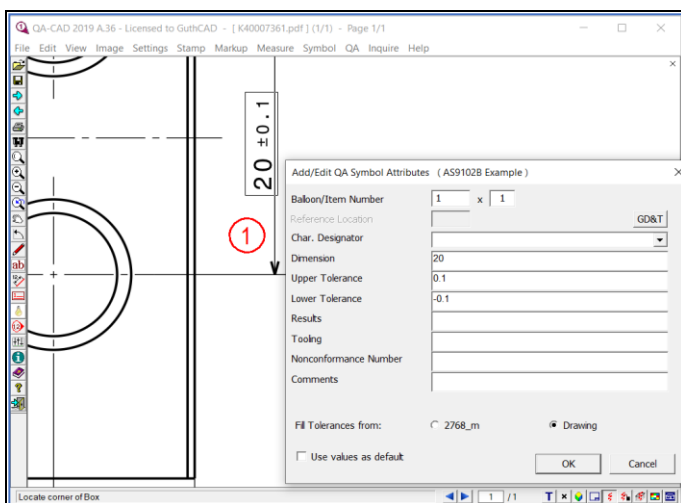


[Select File > Save Markup Edits to save the work ballooned drawing.]

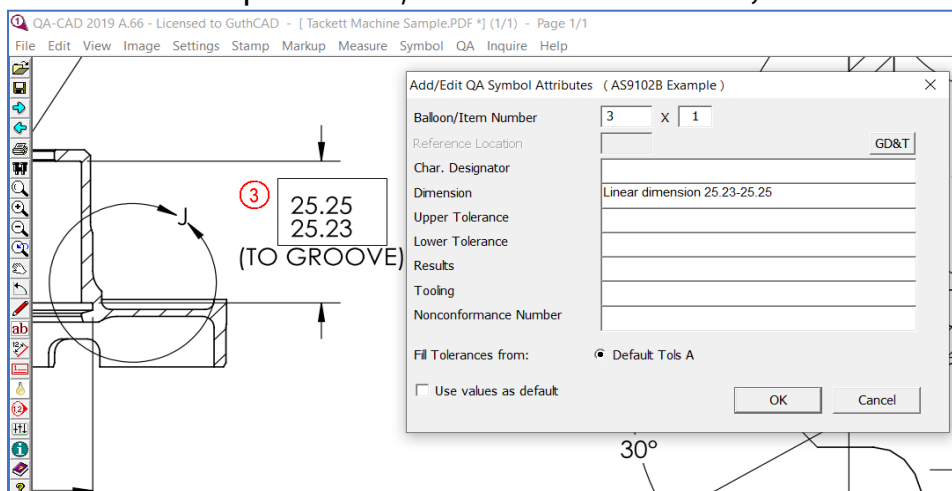
Tips: If you would like to capture dimension and tolerance, capture them together.



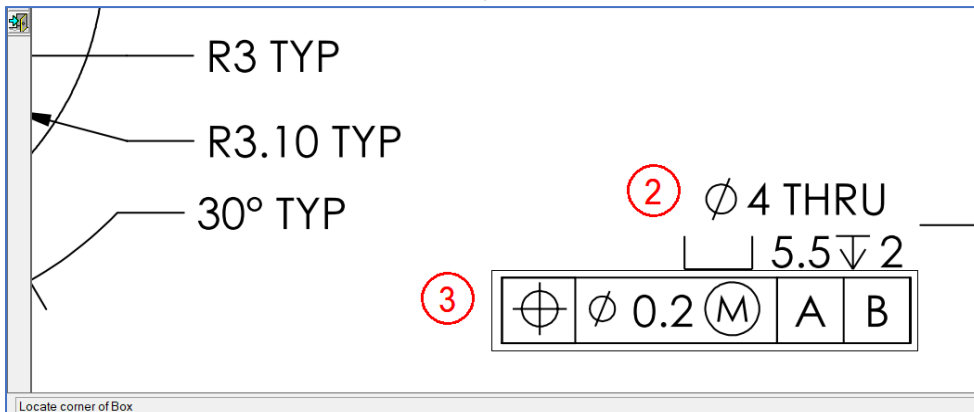
Tips: You can capture dimension, tolerance, note or GD&T vertically in QA-CAD.



You can also capture max/ min dimension limits, diameter limits and radius limits.

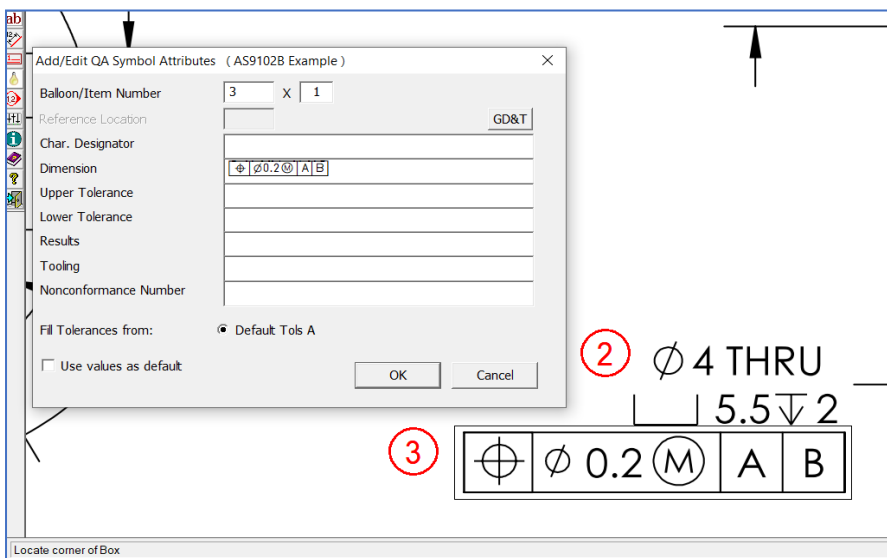


Step 21: When you capture the GD&T features control frame or the composite GD&T feature control frame, **select the whole rectangle of the GD&T features control frame** as you can see from the below image (To capture counterbore and depth like '□ 5.5↴2', use the OCR method like GD&T).



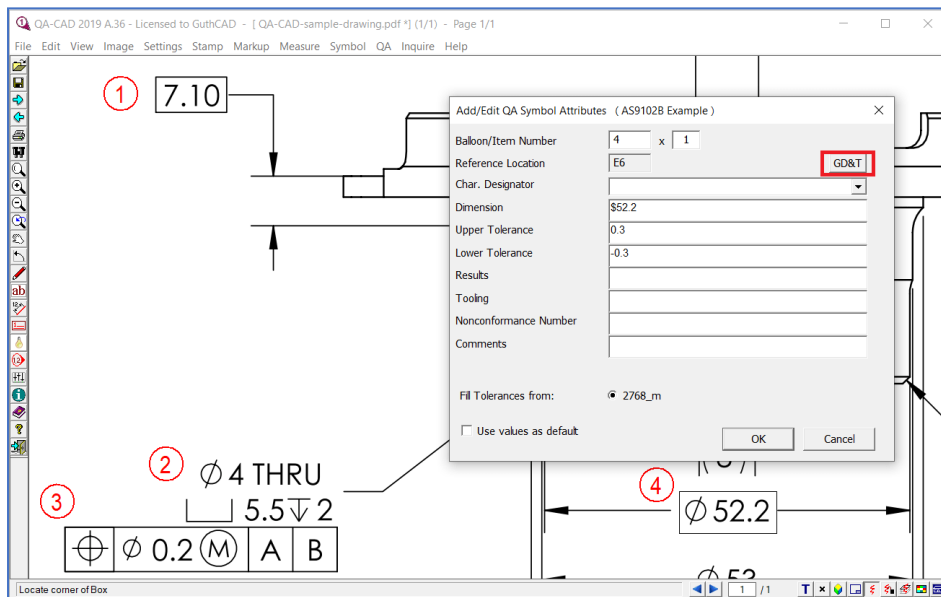
Double left-click, once you complete to draw the rectangle as you can see from the above image.

The captured GD&T control frame was inserted in dimension field (You can also select Ture Position in Character designator field).



(If you cannot capture GD&T, check Font Settings if our GD&T font file, GuthCAD-GDT.ttf, has been installed in your PC. If not find the font, re-install QA-CAD and reboot your PC.)

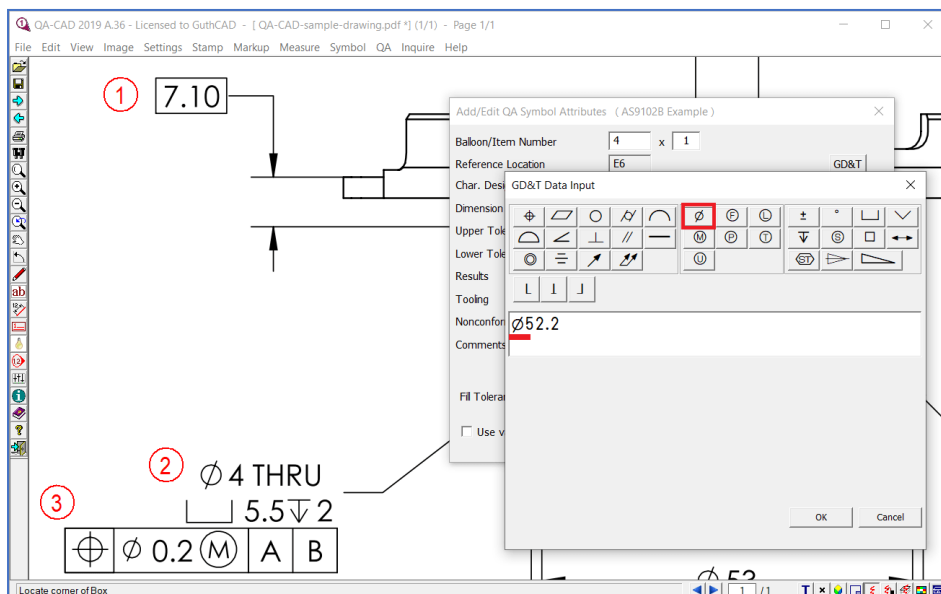
Step 23: If the OCR result is not correct, press the Cancel button and do the OCR operation again.



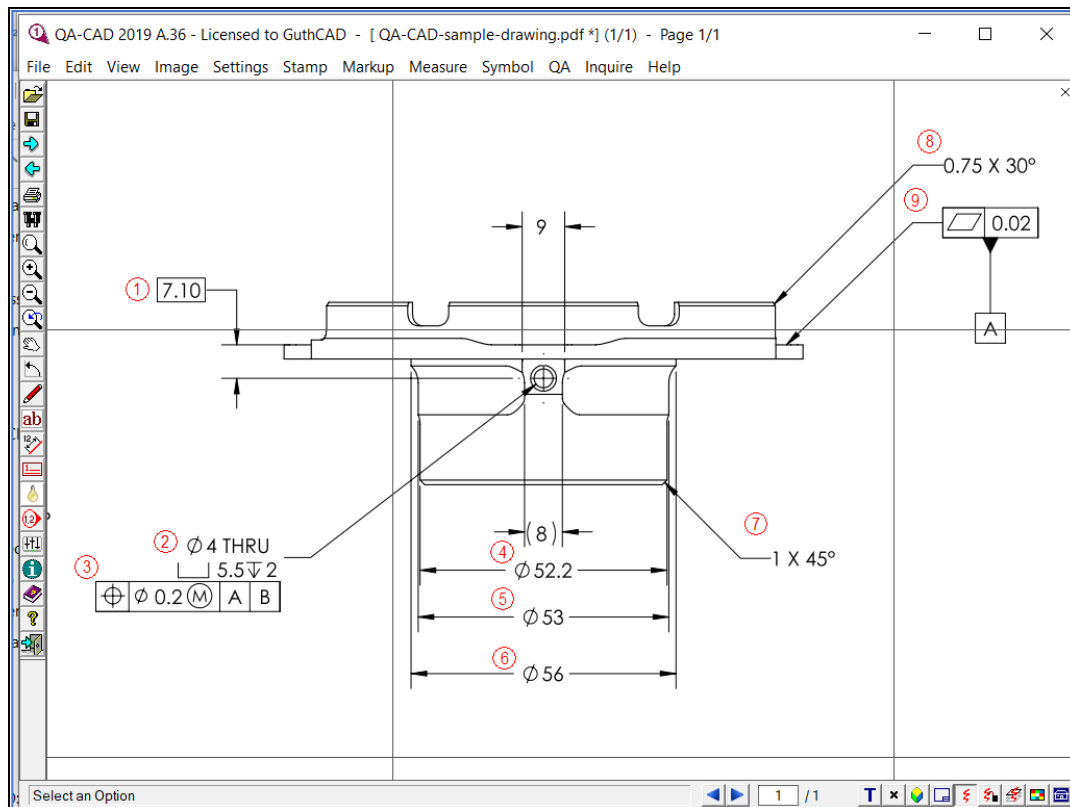
#The software screen zoom rate affects the OCR accuracy. Zooming in or out by rolling the middle mouse wheel button can produce more accurate OCR results. You might need to test and find the best available screen zoom rate depends on your target drawing.

Or alternatively press the GD&T input button (if the result is dimension, tolerance or text note, you can directly correct by typing your PC keyboard).

GD&T Data input window opens. Press a correct symbol button or type correct numbers from keyboard (The above OCR result, \$52.2, was not correct. So \$ was replaced by \varnothing). Then press OK button. Furthermore, you can type welds and material surface symbols in this software keyboard.



Step 24. Keep repeating this operation until you finish placing all required balloons on the drawing.



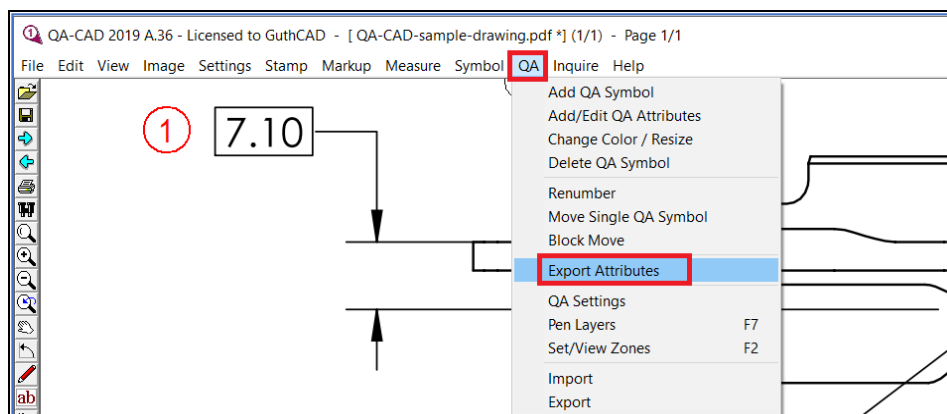
(To understand further, please watch the QA-CAD OCR feature tutorial video clip from the next web page. <https://www.guthcad.com/tutorials/qa-cad/How-to-use-OCR-in-QA-CAD2.html>)

Output captured data to EXCEL template

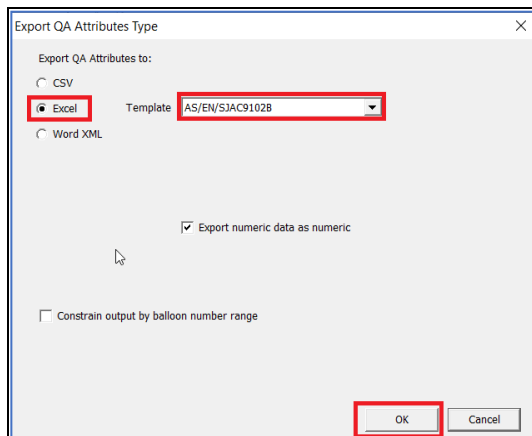


[Click here to watch this section's demo video clip.](#)

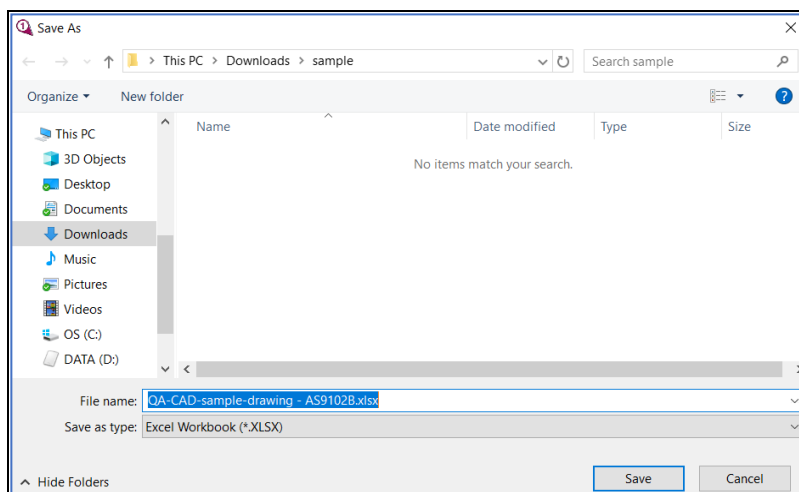
Step 25. Now choose 'export attributes' from QA menu.



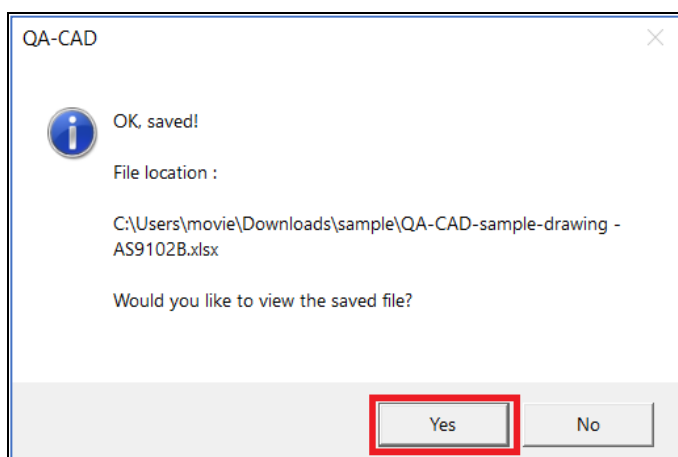
Then select AS9102B EXCEL template file and press OK button (If you selected PPAP or your EXCEL template in Step5, select your designated EXCEL template here. Also you can select AS9102B Word template file here if you like).



Type your new EXCEL file name and press Save button.



Then press Yes button here.



Step 26. As you can see, all values in the balloons are exported to the AS9102 Rev. B Form3 template.

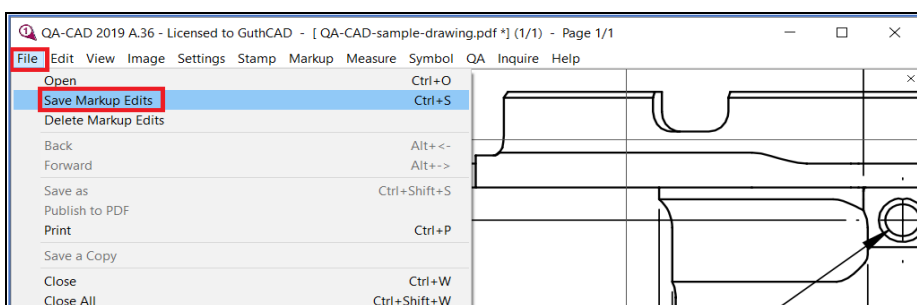
Sample AS9102B Form													
FORM 3: CHARACTERISTIC ACCOUNTABILITY, VERIFICATION, AND COMPATIBILITY EVALUATION													
1. Part Number		2. Part Name		3. Serial Number		4. Characteristic Accountability				5. Inspection / Test Results			
5. Char No.	6. Reference Location	7. Characteristic Designator	8. Requirement	Upper Tolerance	Lower Tolerance	9. Results	10. Designed / Qualified Tooling	11. Nonconformance Number	12. Additional Information	13. Additional Information	14. Additional Information	15. Additional Information	16. Additional Information
1	Sheet 1, F7	Linear Dimension	7.1	0.2	-0.2								
2	Sheet 1, E7		Ø 4 THRU	0.1	-0.1								
3	Sheet 1, E7	True Position	⊕ Ø0.2Ⓜ A B										
4	Sheet 1, E6		Ø 52.2	0.3	-0.3								
5	Sheet 1, E6		Ø 53	0.3	-0.3								
6	Sheet 1, E6		Ø 56	0.3	-0.3								
7	Sheet 1, E6		1X 45°	0.1	-0.1								
8	Sheet 1, F5		0.75 X 30°	0.1	-0.1								
9	Sheet 1, F5	Flatness	Ⓜ 0.02										

Save the ballooning data without changing an original drawing (to save the work ballooned drawing).



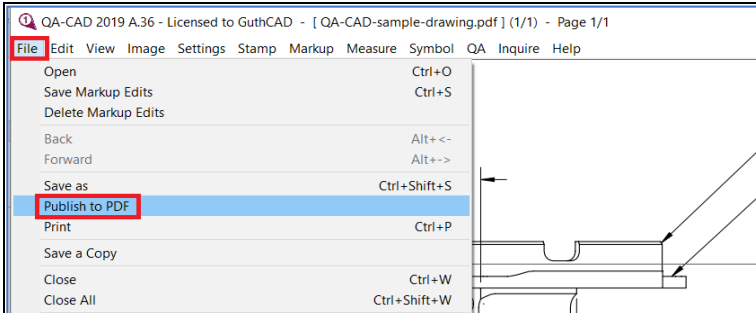
[Click here to watch this section's demo video clip.](#)

Step 27. Select File > Save Markup Edits to save the work ballooned drawing (This operation generates a CVM file which stores all overlaid balloons and markup information. The original drawing is untouched). When you re-open the ballooned drawing, select the drawing file, not the CVM file.

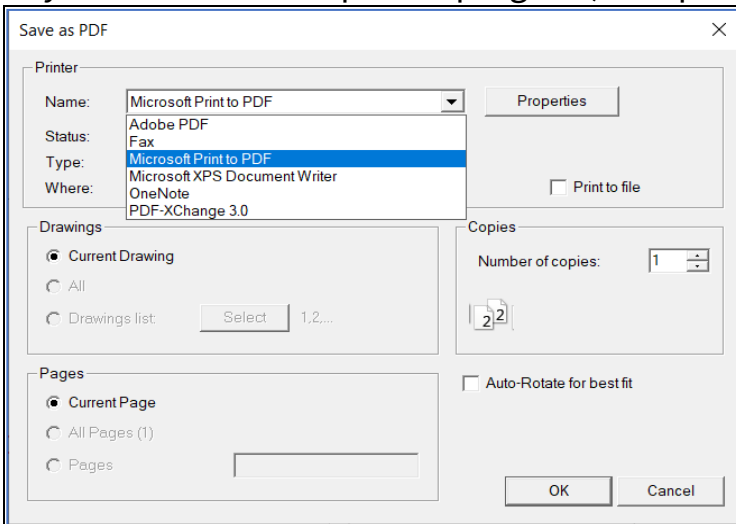


Publish the ballooned drawing to PDF (to save the delivery ballooned drawing.)

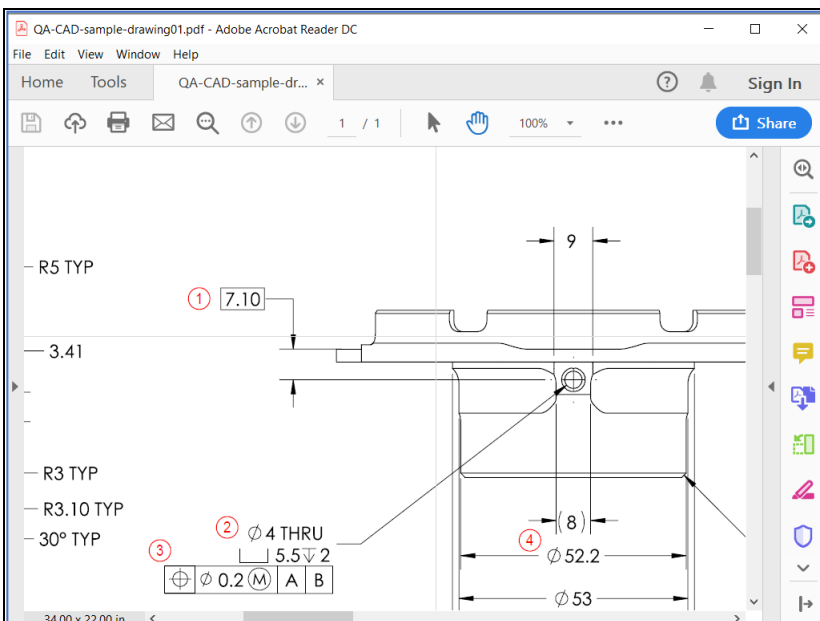
Step 28. You can also publish the ballooned drawing to PDF. Select File >> Publish to PDF



Select PDF printer program (e.g. 'PDF-Xchange 3.0', 'Microsoft prints to PDF', 'Adobe PDF', or your favourite PDF printer program) and proceed PDF output.



Once you publish to PDF, you can see the ballooned PDF in your PDF reader software.

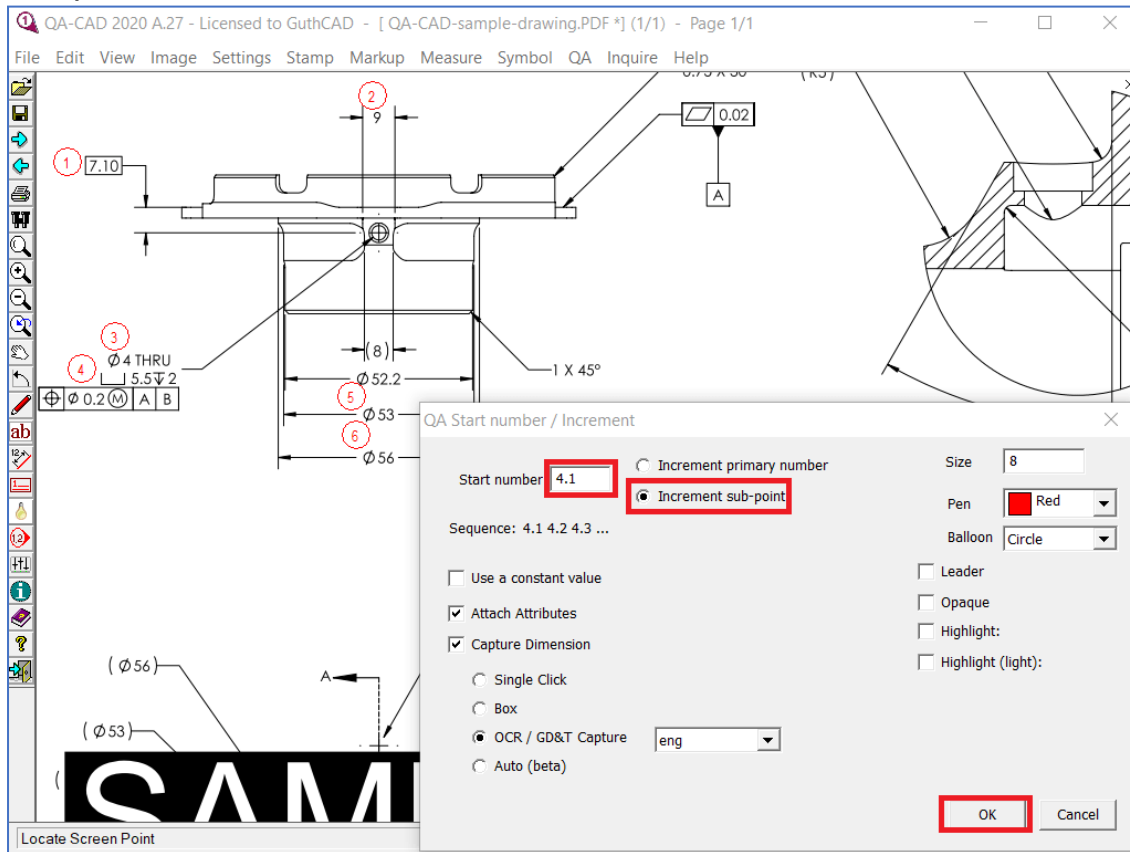


How to enter a new balloon that was missed and the following balloons will change automatically

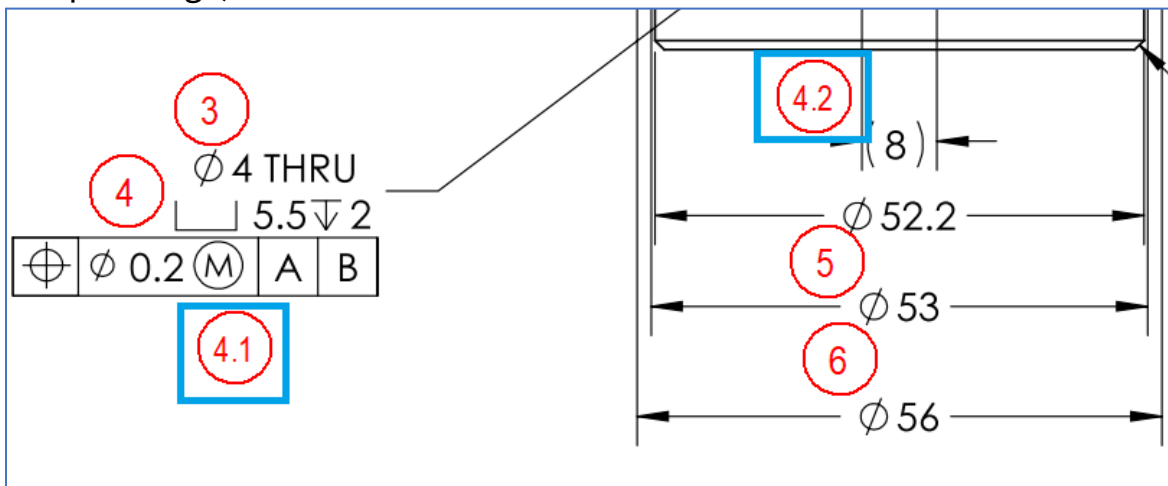


[Click here to watch this section's demo video clip.](#)

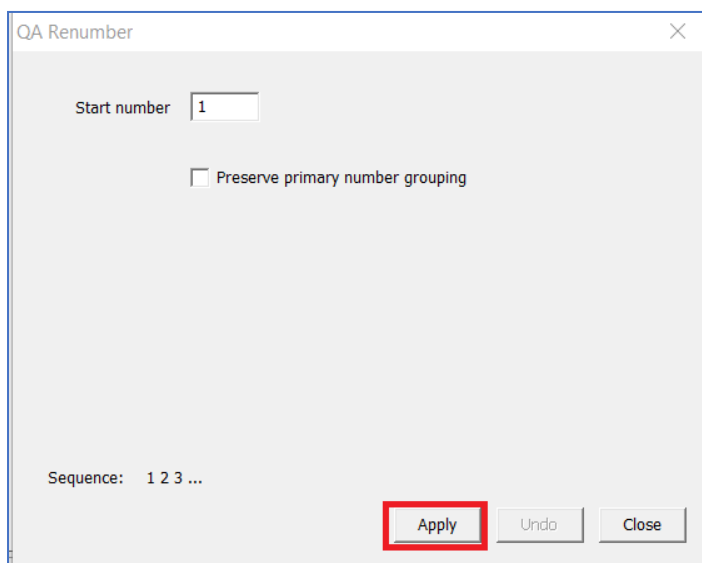
If you find that you have missed drawing balloon(s) after you drew several balloons (for example: 1,2,3,4,5,6) on the drawing. Select the Add QA symbol from QA menu. Then type a Start number (for example: 4.1 in the sample image). Select the Increment sub-point and press the OK button.



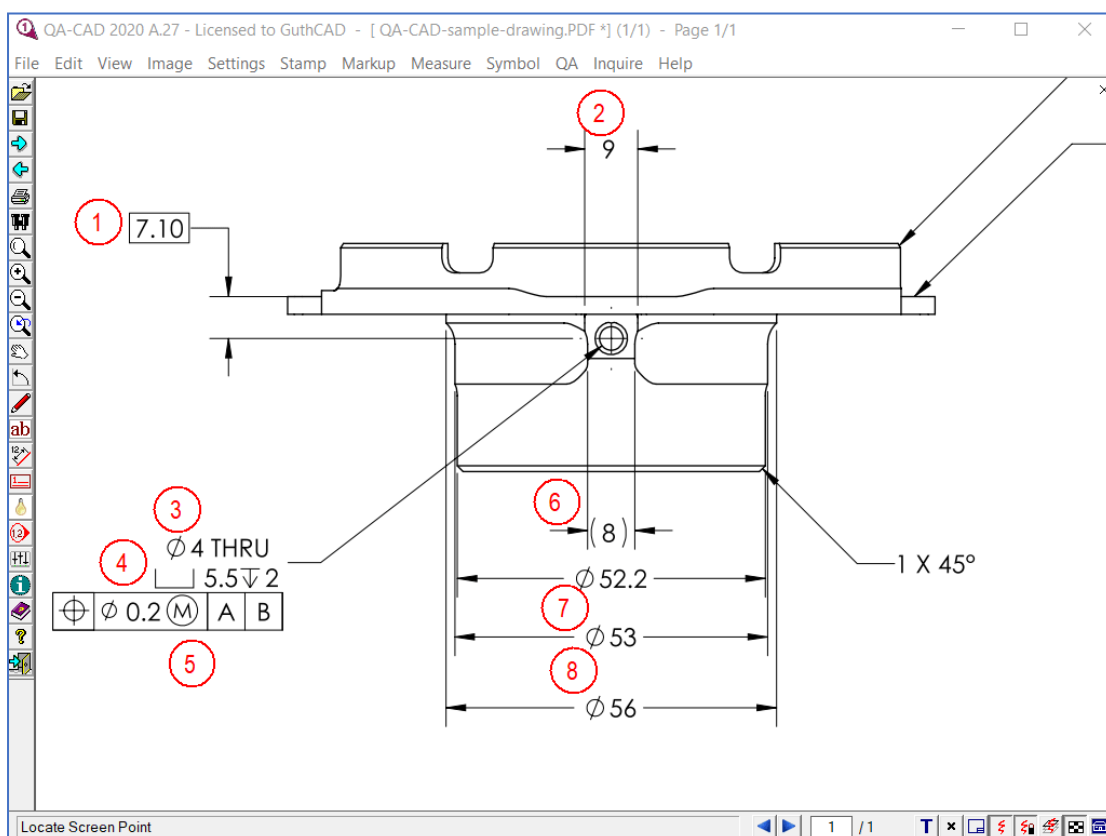
Draw new balloon(s) on the drawing (for example: 4.1 and 4.2 in the blue rectangles of the sample image).



Select the renumber from the QA menu. Press the Apply button in the QA Renumber window (Please leave 1 as a Start number here).



Then balloon # 4.1, 4.2, and the following balloon numbers are renumbered automatically.
(1,2,3,4,4.1,4.2,5,6) --> (1,2,3,4,5,6,7,8)



How to output captured data to two different EXCEL forms (Split the EXCEL output)

QA-CAD can export captured data to two different EXCEL forms. Before you do ballooning, select the QA settings from the QA menu. Tick the Attributes Tab and click the Configure EXCEL template button. The Manage EXCEL templates Window opens. Tick 'Split data output'. Select a new Sheet and press the Configure Columns button. Once you finish configuring your second EXCEL output columns, press the Save button and the OK button.

Manage Excel templates

Definition table: AS/EN/SJAC9102B Example

Template Name: AS/EN/SJAC9102B [New] [Rename] [Delete]

[Import] [Export]

Excel File Name: C:\Users\movie\AppData\Roaming\GuthCAD\QA12\C10\AS_EN_SJAC9102B_t... [Open]

☒ Split data output

Sheet: Form3 Start Row: 11 (Cell: A1) [Configure Columns]

Sheet: Form1 Start Row: 1 (Cell: A1) [Configure Columns]

☐ Store large data to multiple sheets

Primary sheet end row: 60

Subsequent sheets start row: 1

Subsequent sheets end row: 50

[Save] [OK] [Cancel]

Once you complete ballooning, select the Export Attributes from the QA menu. Then the Export QA Attributes Type Window Opens. Tick 'Constrain output by balloon number range'. Then set up two different balloon number groups (In the below example image, the balloon number 1 to 10 are selected to export to an EXCEL Form3 and the balloon number 11 to 20 are selected to export to an EXCEL Form1). Press the OK button to export to EXCEL forms.

Export QA Attributes Type

Export QA Attributes to:

☐ CSV ☒ Excel Template: AS/EN/SJAC9102B

☒ Export numeric data as numeric

☒ Constrain output by balloon number range

Form3	Form1
Start: 1	Start: 11
End: 10	End: 20

[OK] [Cancel]

QA-CAD Purchase Link with Special Discount Coupon
(Only available to pay in US dollars at our online shop web page)
<https://guthcad.cleverbridge.com/525/uurl-dcyzvd1e6d>

Other QA-CAD tutorials are available at the below URL.
<https://www.guthcad.com/tutorials/qa-cad/QA-CAD-download-tutorial.html>

© 2021 Guthrie CAD/GIS Software Pty Ltd.